

CHANNEL INSTALLATION BOX KD 1 70/47 K2 gr

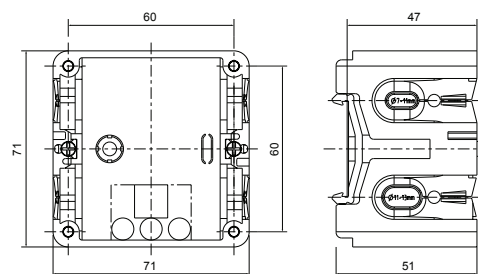
Trunking box (single) for DIN-rail mounting

Floor mounted trunking box made out of polypropylene for DIN-rail mounting and fixation of flanged sockets and switches. (Box can be used for wall trunking devices with a installation height of 47 mm and integrated DIN-rail.)

- Height: 47mm
- Material: polypropylene, flame-retardant
- Color: grey
- for PCE CEE-flanged products with flange size of 75x75 (fixing center 60x60 mm) combined with PCE flange 810-00
- Protection degree: IP20



37004701



pack. unit: 1 pcs.

Cat.No. 37004701

Socket 16A 5p 6h for DIN-rail mounting

Installation box (single) for DIN-rail mounted IP20 with flanged socket CEE 16A 5-pole

Floor mounted trunking box made out of polypropylene for DIN-rail mounting with CEE flanged socket 16A 5-pole (75x75mm) and flange including screws:

- 16A 5-pole 6h 400V~
- Screw terminals
- Contacts: brass



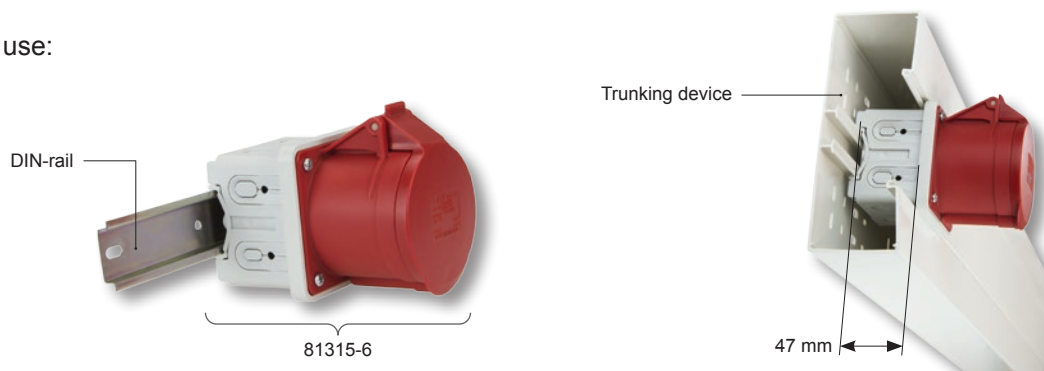
Shipment::

- Installation box (37004701)
- Flange (810-00)
- CEE socket 6A/5p (315-6f7)
- incl. 4 screws

pack.unit: 1 pcs.

Cat.No. 81315-6

Example of use:



For more information visit www.pcelectric.at or contact our sales team!