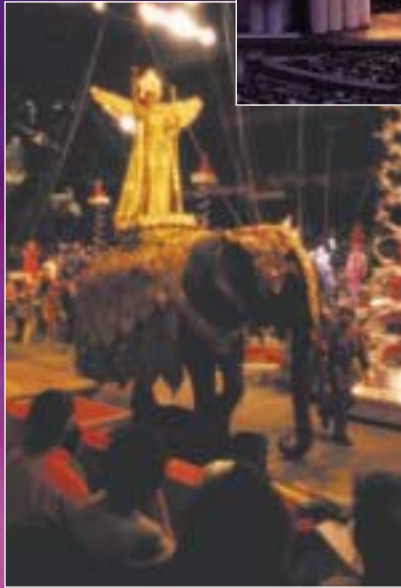


Single Pole Cam-Type Connectors



For Commercial
and Industrial
Temporary and
Portable Power
Connections

A wide variety of single pole cam-type connectors for temporary and portable power distribution



Single Pole Cam-Type Connectors

CAM CONNECTORS FOR COMMERCIAL
AND INDUSTRIAL USE

Overview, Features and Benefits	1
Experience the Difference	1
AMPACITY Chart	2
Up to 125 AMP	
15 Series—Taper Nose	3-5
Up to 400 AMP	
16 Series—Taper Nose	6-20
18 Series—Ball Nose	21-35
Up to 690 AMP	
17 Series—Taper Nose	36-41
19 Series—Ball Nose	42-47
22/23 Series—Latching Ball Nose/ Latching Taper Nose	48-52
Product Accessories & Tools	53
Index	54-57



Single Pole Cam-Type Connectors

Cam Connectors for Commercial and Industrial Use

Leviton offers a wide variety of single pin cam-type cable connectors and panel mount receptacles that supply temporary electrical power distribution for multiple indoor and outdoor applications. The heavy-duty connectors are the standard for the following markets:

- **Entertainment and Movie Industry**
- **Concerts and Theme Parks**
- **Carnival Equipment**
- **Conventions.**

Other applications include:

- **Motor and Generator Splices**
- **Mining and Construction Sites**
- **Commercial and Navy Shipbuilding & Repair**
- **Other temporary power applications.**

Leviton manufactures the highest quality single pin connectors available. Our connectors are completely compatible with competitive cam-type products and can be retrofitted to existing locations and power distribution systems. We offer a variety of quick connect/disconnect connectors for various amperage ratings in a multitude of cable sizes. Connectors are available in two styles:

- **Field detachable**
- **Vulcanized**

We also offer ball nose and taper nose configurations.

Leviton Cam-Type Connectors

Features and Benefits

- Intermateable and compatible with competitive cam-type products—can be retrofitted to existing locations and power distribution systems
- Locking and reinforcing ring won't melt, break or crack
- Shatter and crack proof—high durometer thermoplastic elastomer (TPE) or neoprene rubber
- Color-coded insulating sleeves—fast and easy phase identification
- Prevents arcing or burning—no movement of contact surfaces
- Self compensating for wear—slit and cam in male contact provides spring action for longer usage
- Quick connect/disconnect—twist and pull provided by double cam male and cam button in female
- High conductivity—positive, vibration-proof connection provided by double cam design
- Wide range of applications—usable with a wide range of cable and amperage ratings
- Most meet NEC Code requirements, and are UL Listed, and CSA Certified, and NEMA 3R-Rated (Rainproof) for use outdoors.

Experience the Difference

Our cam-type connectors are designed for easy assembly and disassembly without special tools. An insulated screw is used to tightly secure the contact inside the insulating sleeve, making assembly, disassembly and field repairs effortless. The connectors use plastic locking and reinforcement rings molded into insulating sleeves and receptacles. Under severe stress and load conditions, plastic locking and reinforcement rings will not melt, break or crack. Other quality differences include:

- Reusable sleeves and contacts
- Preservation of cable length
- Snug fit due to Helox shape of connection as well as cable cutoffs that accommodate a wide range of cable sizes
- Hard thermoplastic elastomer screw head provides strength and durability
- Collar around port provides protection for insulated screw
- Quick check for cable-to-contact connection

Single Pole Cam-Type Connectors

Ampacity Chart

CABLE SIZE	MAXIMUM ALLOWABLE AMPACITIES		
	60°C (140°F) Cable	75°C (167°F) Cable	90°C (194°F) Cable
#8	60	70	80
#6	80	95	105
#4	105	125	125
#3	120	145	165
#2	140	170	190
#1	165	195	220
1/0	195	230	260
2/0	225	265	300
3/0	260	310	350
4/0	300	360	400
250MCM	340	405	455
300MCM	375	445	505
350MCM	420	505	570
400MCM	455	545	615
500MCM	515	620	690

15 Series — Taper Nose — Up to 125 AMP,* 600V



Male Detachable Plug—Set Screw (Cable Size: #8–#4)

COLOR	COMPLETE CAT. NO.	CONTACT CAT. NO.	INSULATOR CAT. NO.
Black	15D21-E	15D21-C	15SDM-48E
White	15D21-W	15D21-C	15SDM-48W
Red	15D21-R	15D21-C	15SDM-48R
Blue	15D21-B	15D21-C	15SDM-48B
Green	15D21-G	15D21-C	15SDM-48G
Yellow	15D21-Y	15D21-C	15SDM-48Y
Orange	15D21-O	15D21-C	15SDM-48O
Brown	15D21-H	15D21-C	15SDM-48H

Female Detachable Plug—Set Screw (Cable Size: #8–#4)

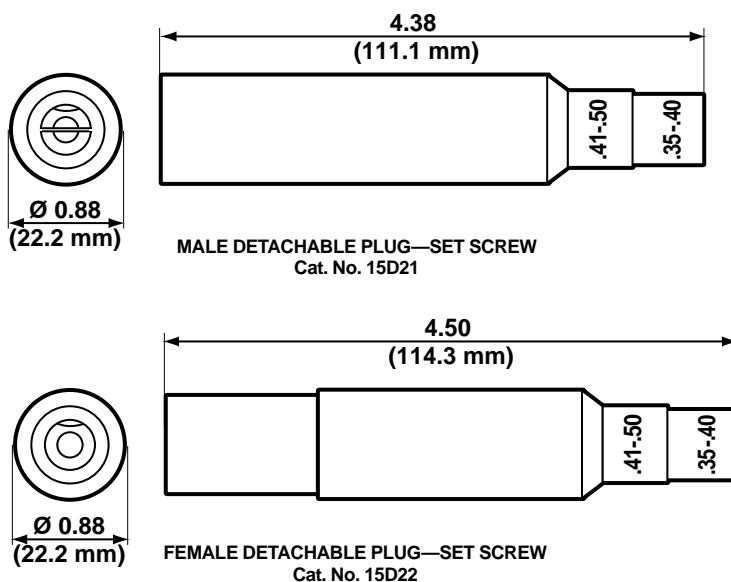
COLOR	COMPLETE CAT. NO.	CONTACT CAT. NO.	INSULATOR CAT. NO.
Black	15D22-E	15D22-C	15SDF-48E
White	15D22-W	15D22-C	15SDF-48W
Red	15D22-R	15D22-C	15SDF-48R
Blue	15D22-B	15D22-C	15SDF-48B
Green	15D22-G	15D22-C	15SDF-48G
Yellow	15D22-Y	15D22-C	15SDF-48Y
Orange	15D22-O	15D22-C	15SDF-48O
Brown	15D22-H	15D22-C	15SDF-48H

SPECIFICATIONS & FEATURES

- The 15 Series Taper Nose mini-cam plugs, receptacles and connectors are tough and reliable. Primary applications include carnivals and theme parks, as well as the entertainment industry

TESTING & CODE COMPLIANCE

- UL Listed E-151429
- NEMA 3R-Rated (Rainproof) for use outdoors



*Refer to Ampacity Chart for all cable sizes on page 2

15 Series — Taper Nose — Up to 125 AMP,* 600V

Male Detachable Plug—Crimped (Cable Size: #8–#4)

COLOR	COMPLETE CAT. NO.	CONTACT CAT. NO.	INSULATOR CAT. NO.
Black	15D23-E	15D23-C	15SDM-48E
White	15D32-W	15D23-C	15SDM-48W
Red	15D23-R	15D23-C	15SDM-48R
Blue	15D23-B	15D23-C	15SDM-48B
Green	15D23-G	15D23-C	15SDM-48G
Yellow	15D23-Y	15D23-C	15SDM-48Y
Orange	15D23-O	15D23-C	15SDM-48O
Brown	15D23-H	15D23-C	15SDM-48H



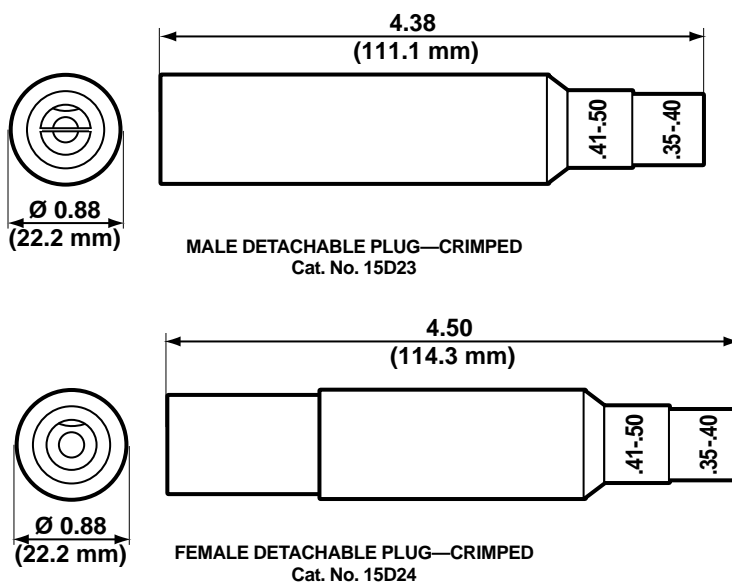
Female Detachable Plug—Crimped (Cable Size: #8–#4)

COLOR	COMPLETE CAT. NO.	CONTACT CAT. NO.	INSULATOR CAT. NO.
Black	15D24-E	15D24-C	15SDF-48E
White	15D24-W	15D24-C	15SDF-48W
Red	15D24-R	15D24-C	15SDF-48R
Blue	15D24-B	15D24-C	15SDF-48B
Green	15D24-G	15D24-C	15SDF-48G
Yellow	15D24-Y	15D24-C	15SDF-48Y
Orange	15D24-O	15D24-C	15SDF-48O
Brown	15D24-H	15D24-C	15SDF-48H



SPECIFICATIONS & FEATURES

- The 15 Series Taper Nose mini-cam plugs, receptacles and connectors are tough and reliable. Primary applications include carnivals and theme parks, as well as the entertainment industry



*Refer to Ampacity Chart for all cable sizes on page 2

15 Series — Taper Nose — Up to 125 AMP,* 600V



Panel Receptacle—Threaded Stud (Cable Size: #8—#4)

	MALE	FEMALE
COLOR	CAT. NO.	CAT. NO.
Black	15R21-E	15R22-E
White	15R21-W	15R22-W
Red	15R21-R	15R22-R
Blue	15R21-B	15R22-B
Green	15R21-G	15R22-G
Yellow	15R21-Y	15R22-Y
Orange	15R21-O	15R22-O
Brown	15R21-H	15R22-H

Protective Caps

	MALE	FEMALE
COLOR	CAT. NO.	CAT. NO.
Black	15P21-E	15P22-E

Three-way "T" Connector

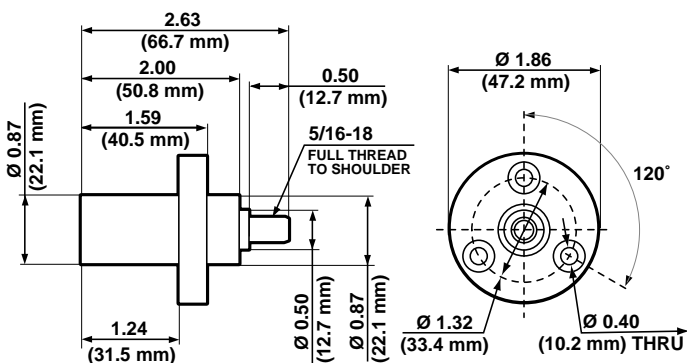
	PARALLELING T FEMALE-MALE-MALE	TAPPING T FEMALE-FEMALE-MALE	DOUBLE FEMALE FEMALE-FEMALE
COLOR	CAT. NO.	CAT. NO.	CAT. NO.
Black	15A21-E	15A22-E	15A23-E
White	15A21-W	15A22-W	15A23-W
Red	15A21-R	15A22-R	15A23-R
Blue	15A21-B	15A22-B	15A23-B
Green	15A21-G	15A22-G	15A23-G

SPECIFICATIONS & FEATURES

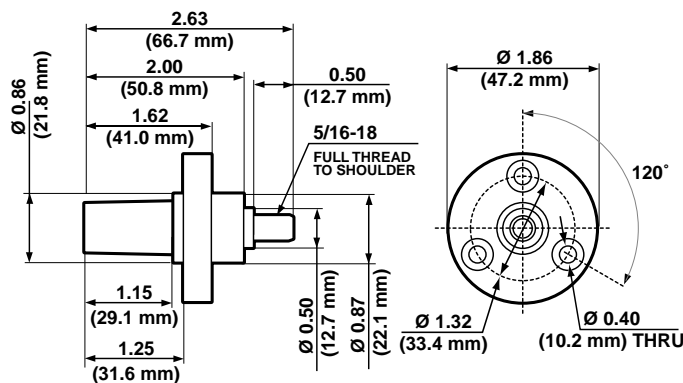
- The 15 Series Taper Nose mini-cam plugs, receptacles and connectors are tough and reliable. Primary applications include carnivals and theme parks, as well as the entertainment industry

TESTING & CODE COMPLIANCE

- UL Listed E-151429
- NEMA 3R-Rated (Rainproof) for use outdoors



MALE PANEL RECEPTACLE THREADED STUD
Cat. No. 15R21



FEMALE PANEL RECEPTACLE THREADED STUD
Cat. No. 15R22

*Refer to Ampacity Chart for all cable sizes on page 2

16 Series — Taper Nose — Up to 400 AMP,* 600V

Male Detachable Plug—Single Set Screw (Cable Size: #2–2/0)

COLOR	COMPLETE CAT. NO.	CONTACT CAT. NO.	INSULATOR CAT. NO.
Black	16D21-E	16D21-C	16SDM-22E
White	16D21-W	16D21-C	16SDM-22W
Red	16D21-R	16D21-C	16SDM-22R
Blue	16D21-B	16D21-C	16SDM-22B
Green	16D21-G	16D21-C	16SDM-22G
Yellow	16D21-Y	16D21-C	16SDM-22Y
Orange	16D21-O	16D21-C	16SDM-22O
Brown	16D21-H	16D21-C	16SDM-22H



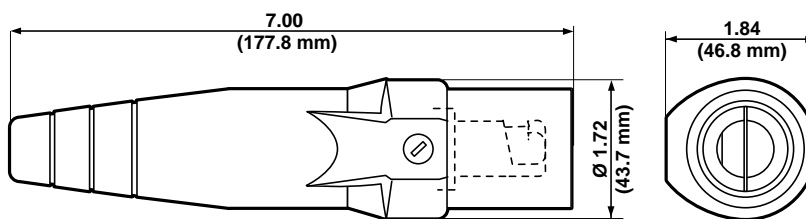
Female Detachable Plug—Single Set Screw (Cable Size: #2–2/0)

COLOR	COMPLETE CAT. NO.	CONTACT CAT. NO.	INSULATOR CAT. NO.
Black	16D29-E	16D29-C	16SDF-22E
White	16D29-W	16D29-C	16SDF-22W
Red	16D29-R	16D29-C	16SDF-22R
Blue	16D29-B	16D29-C	16SDF-22B
Green	16D29-G	16D29-C	16SDF-22G
Yellow	16D29-Y	16D29-C	16SDF-22Y
Orange	16D29-O	16D29-C	16SDF-22O
Brown	16D29-H	16D29-C	16SDF-22H

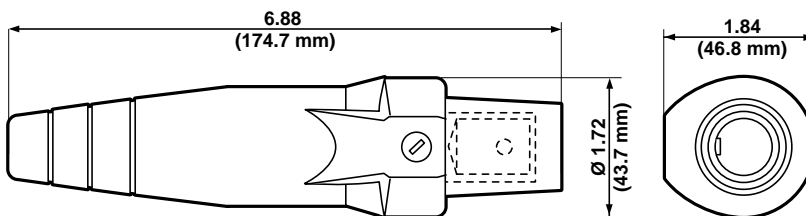


SPECIFICATIONS & FEATURES

- Leviton ECT 16 Series Taper Nose products are the connectors of choice for concerts, sound stages, movie making, television production, sporting events and conventions.



MALE DETACHABLE PLUG—SINGLE SET SCREW
Cat. No. 16D21



FEMALE DETACHABLE PLUG—SINGLE SET SCREW
Cat. No. 16D29

*Refer to Ampacity Chart for all cable sizes on page 2

16 Series — Taper Nose — Up to 400 AMP,* 600V



Male Detachable Plug—Single Set Screw (Cable Size: 1/0–4/0)

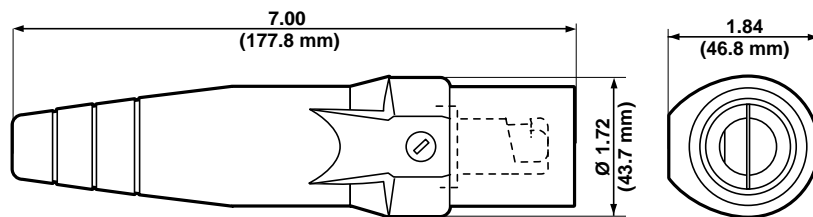
COLOR	COMPLETE CAT. NO.	CONTACT CAT. NO.	INSULATOR CAT. NO.
Black	16D23-E	16D23-C	16SDM-14E
White	16D23-W	16D23-C	16SDM-14W
Red	16D23-R	16D23-C	16SDM-14R
Blue	16D23-B	16D23-C	16SDM-14B
Green	16D23-G	16D23-C	16SDM-14G
Yellow	16D23-Y	16D23-C	16SDM-14Y
Orange	16D23-O	16D23-C	16SDM-14O
Brown	16D23-H	16D23-C	16SDM-14H

Female Detachable Plug—Single Set Screw (Cable Size: 1/0–4/0)

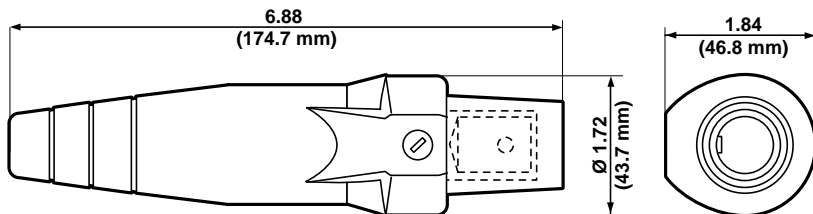
COLOR	COMPLETE CAT. NO.	CONTACT CAT. NO.	INSULATOR CAT. NO.
Black	16D32-E	16D32-C	16SDF-14E
White	16D32-W	16D32-C	16SDF-14W
Red	16D32-R	16D32-C	16SDF-14R
Blue	16D32-B	16D32-C	16SDF-14B
Green	16D32-G	16D32-C	16SDF-14G
Yellow	16D32-Y	16D32-C	16SDF-14Y
Orange	16D32-O	16D32-C	16SDF-14O
Brown	16D32-H	16D32-C	16SDF-14H

SPECIFICATIONS & FEATURES

- Leviton ECT 16 Series Taper Nose products are the connectors of choice for concerts, sound stages, movie making, television production, sporting events and conventions.



MALE DETACHABLE PLUG—SINGLE SET SCREW
Cat. No. 16D23



FEMALE DETACHABLE PLUG—SINGLE SET SCREW
Cat. No. 16D32

*Refer to Ampacity Chart for all cable sizes on page 2

16 Series — Taper Nose — Up to 400 AMP,* 600V

Male Detachable Plug—Double Set Screw (Cable Size: #2–2/0)

COLOR	COMPLETE CAT. NO.	CONTACT CAT. NO.	INSULATOR CAT. NO.
Black	16D22-E	16D22-C	16SDM-22E
White	16D22-W	16D22-C	16SDM-22W
Red	16D22-R	16D22-C	16SDM-22R
Blue	16D22-B	16D22-C	16SDM-22B
Green	16D22-G	16D22-C	16SDM-22G
Yellow	16D22-Y	16D22-C	16SDM-22Y
Orange	16D22-O	16D22-C	16SDM-22O
Brown	16D22-H	16D22-C	16SDM-22H



Female Detachable Plug—Double Set Screw (Cable Size: #2–2/0)

COLOR	COMPLETE CAT. NO.	CONTACT CAT. NO.	INSULATOR CAT. NO.
Black	16D31-E	16D31-C	16SDF-22E
White	16D31-W	16D31-C	16SDF-22W
Red	16D31-R	16D31-C	16SDF-22R
Blue	16D31-B	16D31-C	16SDF-22B
Green	16D31-G	16D31-C	16SDF-22G
Yellow	16D31-Y	16D31-C	16SDF-22Y
Orange	16D31-O	16D31-C	16SDF-22O
Brown	16D31-H	16D31-C	16SDF-22H

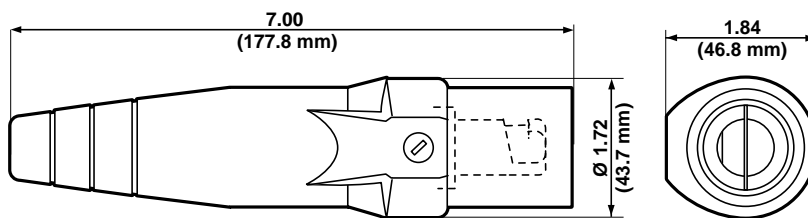


SPECIFICATIONS & FEATURES

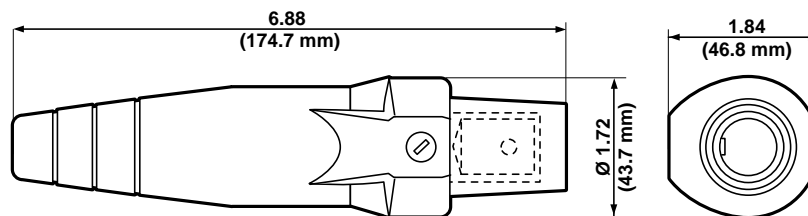
- Leviton ECT 16 Series Taper Nose products are the connectors of choice for concerts, sound stages, movie making, television production, sporting events and conventions.

TESTING & CODE COMPLIANCE

- UL Listed E-151429
- CSA Certified LR-76878-4
- NEMA 3R-Rated (Rainproof) for use outdoors



MALE DETACHABLE PLUG—DOUBLE SET SCREW
Cat. No. 16D22



FEMALE DETACHABLE PLUG—DOUBLE SET SCREW
Cat. No. 16D31

*Refer to Ampacity Chart for all cable sizes on page 2

16 Series — Taper Nose — Up to 400 AMP,* 600V



Male Detachable Plug—Double Set Screw (Cable Size: 1/0–4/0)

COLOR	COMPLETE CAT. NO.	CONTACT CAT. NO.	INSULATOR CAT. NO.
Black	16D24-E	16D24-C	16SDM-14E
White	16D24-W	16D24-C	16SDM-14W
Red	16D24-R	16D24-C	16SDM-14R
Blue	16D24-B	16D24-C	16SDM-14B
Green	16D24-G	16D24-C	16SDM-14G
Yellow	16D24-Y	16D24-C	16SDM-14Y
Orange	16D24-O	16D24-C	16SDM-14O
Brown	16D24-H	16D24-C	16SDM-14H



Female Detachable Plug—Double Set Screw (Cable Size: 1/0–4/0)

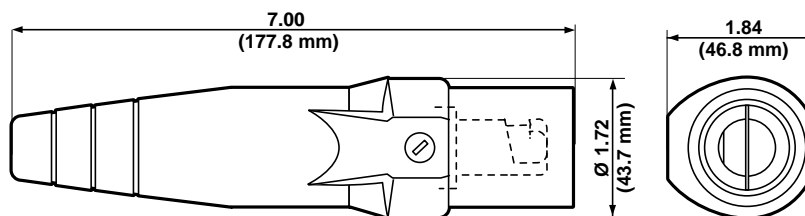
COLOR	COMPLETE CAT. NO.	CONTACT CAT. NO.	INSULATOR CAT. NO.
Black	16D33-E	16D33-C	16SDF-14E
White	16D33-W	16D33-C	16SDF-14W
Red	16D33-R	16D33-C	16SDF-14R
Blue	16D33-B	16D33-C	16SDF-14B
Green	16D33-G	16D33-C	16SDF-14G
Yellow	16D33-Y	16D33-C	16SDF-14Y
Orange	16D33-O	16D33-C	16SDF-14O
Brown	16D33-H	16D33-C	16SDF-14H

SPECIFICATIONS & FEATURES

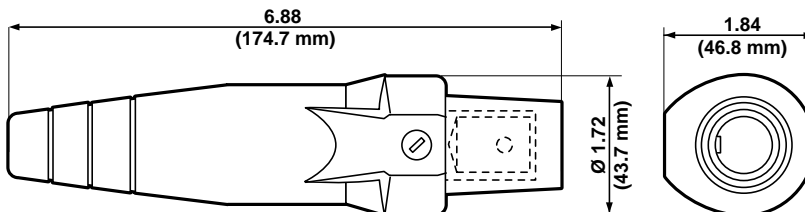
- Leviton ECT 16 Series Taper Nose products are the connectors of choice for concerts, sound stages, movie making, television production, sporting events and conventions.

TESTING & CODE COMPLIANCE

- UL Listed E-151429
- CSA Certified LR-76878-4
- NEMA 3R-Rated (Rainproof) for use outdoors



MALE DETACHABLE PLUG—DOUBLE SET SCREW
Cat. No. 16D24



FEMALE DETACHABLE PLUG—DOUBLE SET SCREW
Cat. No. 16D33

*Refer to Ampacity Chart for all cable sizes on page 2

16 Series — Taper Nose — Up to 400 AMP,* 600V

Male Detachable Plug—Crimped (Cable Size: #2–#1)

COLOR	COMPLETE CAT. NO.	CONTACT CAT. NO.	INSULATOR CAT. NO.
Black	16D25-E	16D25-C	16SDM-22E
White	16D25-W	16D25-C	16SDM-22W
Red	16D25-R	16D25-C	16SDM-22R
Blue	16D25-B	16D25-C	16SDM-22B
Green	16D25-G	16D25-C	16SDM-22G
Yellow	16D25-Y	16D25-C	16SDM-22Y
Orange	16D25-O	16D25-C	16SDM-22O
Brown	16D25-H	16D25-C	16SDM-22H



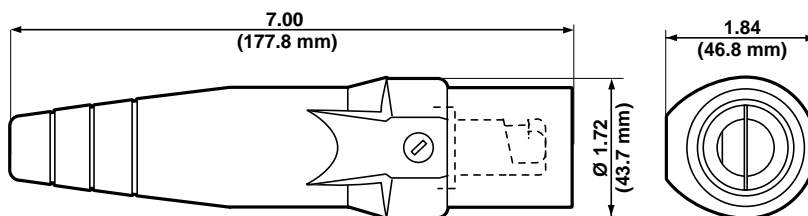
Female Detachable Plug—Crimped (Cable Size: #2–#1)

COLOR	COMPLETE CAT. NO.	CONTACT CAT. NO.	INSULATOR CAT. NO.
Black	16D34-E	16D34-C	16SDF-22E
White	16D34-W	16D34-C	16SDF-22W
Red	16D34-R	16D34-C	16SDF-22R
Blue	16D34-B	16D34-C	16SDF-22B
Green	16D34-G	16D34-C	16SDF-22G
Yellow	16D34-Y	16D34-C	16SDF-22Y
Orange	16D34-O	16D34-C	16SDF-22O
Brown	16D34-H	16D34-C	16SDF-22H

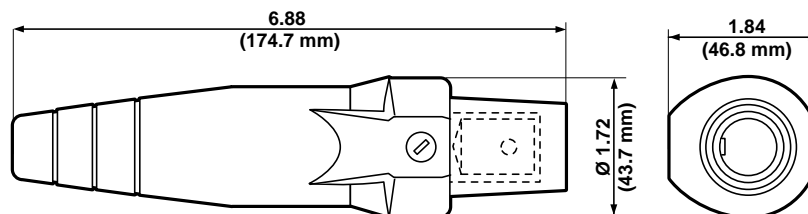


SPECIFICATIONS & FEATURES

- Leviton ECT 16 Series Taper Nose products are the connectors of choice for concerts, sound stages, movie making, television production, sporting events and conventions.



MALE DETACHABLE PLUG—CRIMPED
Cat. No. 16D25



FEMALE DETACHABLE PLUG—CRIMPED
Cat. No. 16D34

*Refer to Ampacity Chart for all cable sizes on page 2

16 Series — Taper Nose — Up to 400 AMP,* 600V



Male Detachable Plug—Crimped (Cable Size: 1/0–2/0)

COLOR	COMPLETE CAT. NO.	CONTACT CAT. NO.	INSULATOR CAT. NO.
Black	16D26-E	16D26-C	16SDM-22E
White	16D26-W	16D26-C	16SDM-22W
Red	16D26-R	16D26-C	16SDM-22R
Blue	16D26-B	16D26-C	16SDM-22B
Green	16D26-G	16D26-C	16SDM-22G
Yellow	16D26-Y	16D26-C	16SDM-22Y
Orange	16D26-O	16D26-C	16SDM-22O
Brown	16D26-H	16D26-C	16SDM-22H

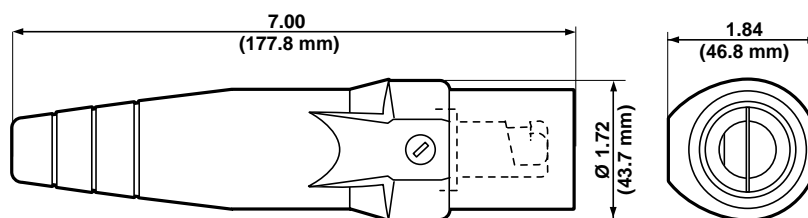


Female Detachable Plug—Crimped (Cable Size: 1/0–2/0)

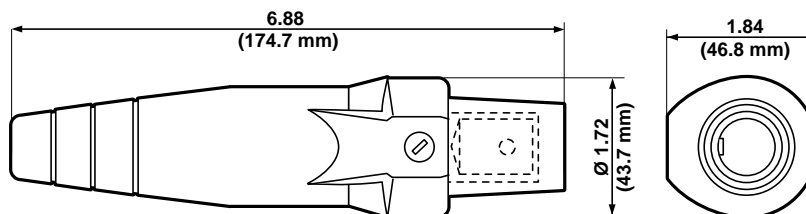
COLOR	COMPLETE CAT. NO.	CONTACT CAT. NO.	INSULATOR CAT. NO.
Black	16D35-E	16D35-C	16SDF-22E
White	16D35-W	16D35-C	16SDF-22W
Red	16D35-R	16D35C	16SDF-22R
Blue	16D35-B	16D35-C	16SDF-22B
Green	16D35-G	16D35-C	16SDF-22G
Yellow	16D35-Y	16D35-C	16SDF-22Y
Orange	16D35-O	16D35-C	16SDF-22O
Brown	16D35-H	16D35-C	16SDF-22H

SPECIFICATIONS & FEATURES

- Leviton ECT 16 Series Taper Nose products are the connectors of choice for concerts, sound stages, movie making, television production, sporting events and conventions.



MALE DETACHABLE PLUG—CRIMPED
Cat. No. 16D26



FEMALE DETACHABLE PLUG—CRIMPED
Cat. No. 16D35

*Refer to Ampacity Chart for all cable sizes on page 2

16 Series — Taper Nose — Up to 400 AMP,* 600V

Male Detachable Plug—Crimped (Cable Size: 3/0–4/0)

COLOR	COMPLETE CAT. NO.	CONTACT CAT. NO.	INSULATOR CAT. NO.
Black	16D28-E	16D28-C	16SDM-14E
White	16D28-W	16D28-C	16SDM-14W
Red	16D28-R	16D28-C	16SDM-14R
Blue	16D28-B	16D28-C	16SDM-14B
Green	16D28-G	16D28-C	16SDM-14G
Yellow	16D28-Y	16D28-C	16SDM-14Y
Orange	16D28-O	16D28-C	16SDM-14O
Brown	16D28-H	16D28-C	16SDM-14H



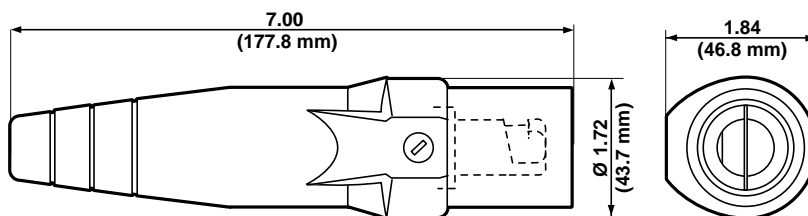
Female Detachable Plug—Crimped (Cable Size: 3/0–4/0)

COLOR	COMPLETE CAT. NO.	CONTACT CAT. NO.	INSULATOR CAT. NO.
Black	16D37-E	16D37-C	16SDF-14E
White	16D37-W	16D37-C	16SDF-14W
Red	16D37-R	16D37-C	16SDF-14R
Blue	16D37-B	16D37-C	16SDF-14B
Green	16D37-G	16D37-C	16SDF-14G
Yellow	16D37-Y	16D37-C	16SDF-14Y
Orange	16D37-O	16D37-C	16SDF-14O
Brown	16D37-H	16D37-C	16SDF-14H

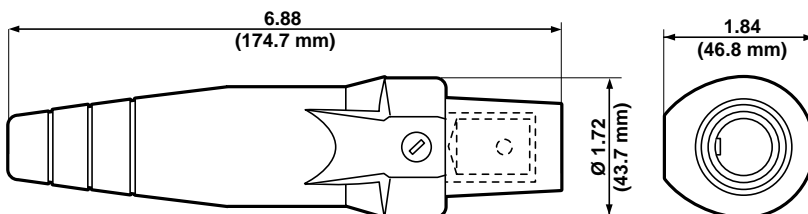


SPECIFICATIONS & FEATURES

- Leviton ECT 16 Series Taper Nose products are the connectors of choice for concerts, sound stages, movie making, television production, sporting events and conventions.



MALE DETACHABLE PLUG—CRIMPED
Cat. No. 16D28



FEMALE DETACHABLE PLUG—CRIMPED
Cat. No. 16D37

*Refer to Ampacity Chart for all cable sizes on page 2

16 Series — Taper Nose — Up to 400 AMP,* 600V



Heavy Duty Male Detachable Plug—Crimped (Cable Size: 1/0–2/0)

COLOR	COMPLETE CAT. NO.	CONTACT CAT. NO.	INSULATOR CAT. NO.
Black	16D27-E	16D27-C	16SDM-HDE
White	16D27-W	16D27-C	16SDM-HDW
Red	16D27-R	16D27-C	16SDM-HDR
Blue	16D27-B	16D27-C	16SDM-HDB
Green	16D27-G	16D27-C	16SDM-HDG
Yellow	16D27-Y	16D27-C	16SDM-HDY
Orange	16D27-O	16D27-C	16SDM-HDO
Brown	16D27-H	16D27-C	16SDM-HDH

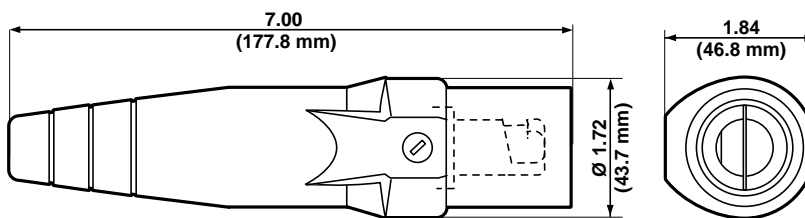


Heavy Duty Female Detachable Plug—Crimped (Cable Size: 1/0–2/0)

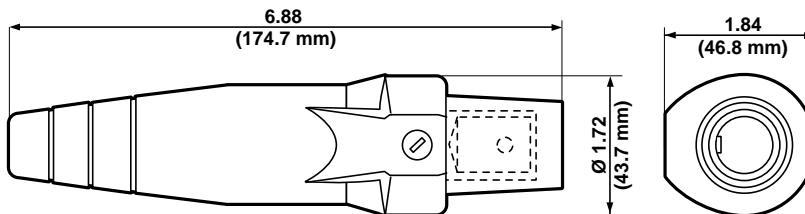
COLOR	COMPLETE CAT. NO.	CONTACT CAT. NO.	INSULATOR CAT. NO.
Black	16D36-E	16D36-C	16SDF-HDE
White	16D36-W	16D36-C	16SDF-HDW
Red	16D36-R	16D36-C	16SDF-HDR
Blue	16D36-B	16D36-C	16SDF-HDB
Green	16D36-G	16D36-C	16SDF-HDG
Yellow	16D36-Y	16D36-C	16SDF-HDY
Orange	16D36-O	16D36-C	16SDF-HDO
Brown	16D36-H	16D36-C	16SDF-HDH

SPECIFICATIONS & FEATURES

- Leviton ECT 16 Series Taper Nose products are the connectors of choice for concerts, sound stages, movie making, television production, sporting events and conventions.



HEAVY DUTY MALE DETACHABLE PLUG—CRIMPED
Cat. No. 16D27



HEAVY DUTY FEMALE DETACHABLE PLUG—CRIMPED
Cat. No. 16D36

*Refer to Ampacity Chart for all cable sizes on page 2

16 Series — Caps and Covers

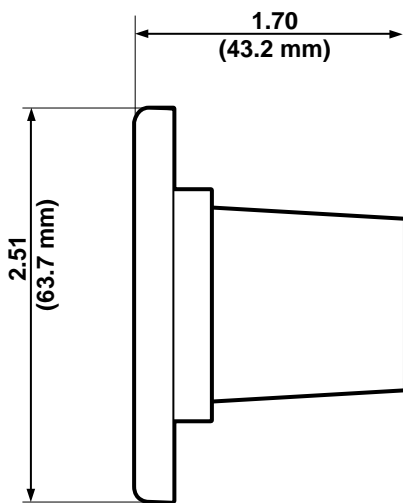
Protective Caps

	MALE	FEMALE
COLOR	CAT. NO.	CAT. NO.
Black	16P21-E	16P22-E
White	16P21-W	16P22-W
Red	16P21-R	16P22-R
Blue	16P21-B	16P22-B
Green	16P21-G	16P22-G
Yellow	16P21-Y	16P22-Y
Orange	16P21-O	16P22-O
Brown	16P21-H	16P22-H

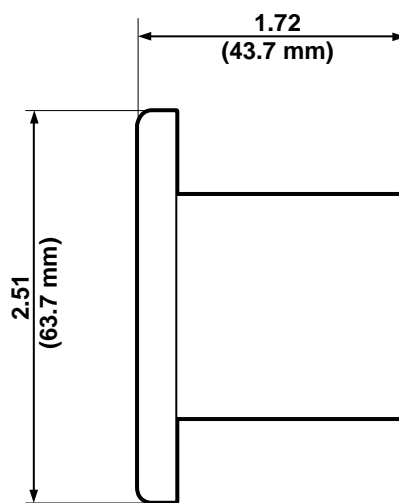


Snap Back Cover—for Male and Female Panel Receptacle

COLOR	CAT. NO.
Black	16S21-E
White	16S21-W
Red	16S21-R
Blue	16S21-B
Green	16S21-G
Yellow	16S21-Y
Orange	16S21-O
Brown	16S21-H



MALE PROTECTIVE CAP
Cat. No. 16P21



FEMALE PROTECTIVE CAP
Cat. No. 16P22

16 Series — Taper Nose — Up to 400 AMP,* 600V



Male Vulcanized Plug—Crimped (Cable Size: #2–#1)

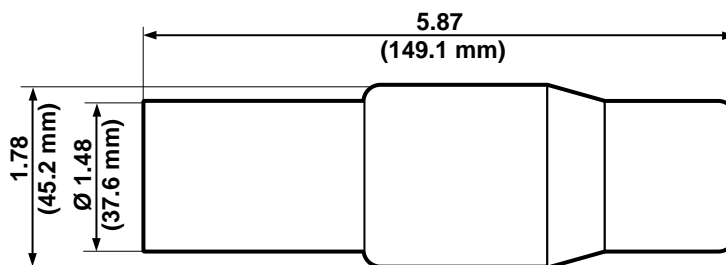
COLOR	COMPLETE CAT. NO.	CONTACT CAT. NO.	INSULATOR CAT. NO.
Black	16V21-E	16V21-C	16SVM-21E
White	16V21-W	16V21-C	16SVM-21W
Red	16V21-R	16V21-C	16SVM-21R
Blue	16V21-B	16V21-C	16SVM-21B
Green	16V21-G	16V21-C	16SVM-21G
Yellow	16V21-Y	16V21-C	16SVM-21Y
Orange	16V21-O	16V21-C	16SVM-21O
Brown	16V21-H	16V21-C	16SVM-21H

Female Vulcanized Plug—Crimped (Cable Size: #2–#1)

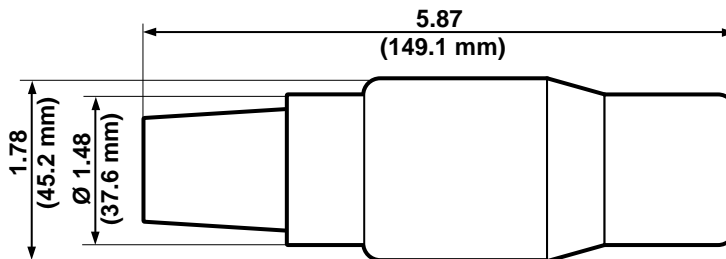
COLOR	COMPLETE CAT. NO.	CONTACT CAT. NO.	INSULATOR CAT. NO.
Black	16V25-E	16V25-C	16SVF-21E
White	16V25-W	16V25-C	16SVF-21W
Red	16V25-R	16V25-C	16SVF-21R
Blue	16V25-B	16V25-C	16SVF-21B
Green	16V25-G	16V25-C	16SVF-21G
Yellow	16V25-Y	16V25-C	16SVF-21Y
Orange	16V25-O	16V25-C	16SVF-21O
Brown	16V25-H	16V25-C	16SVF-21H

SPECIFICATIONS & FEATURES

- Leviton ECT 16 Series Taper Nose products are the connectors of choice for concerts, sound stages, movie making, television production, sporting events and conventions.



MALE VULCANIZED PLUG—CRIMPED
Cat. No. 16V21



FEMALE VULCANIZED PLUG—CRIMPED
Cat. No. 16V25

*Refer to Ampacity Chart for all cable sizes on page 2

16 Series — Taper Nose — Up to 400 AMP,* 600V

Male Vulcanized Plug—Crimped (Cable Size: 1/0–2/0)

COLOR	COMPLETE CAT. NO.	CONTACT CAT. NO.	INSULATOR CAT. NO.
Black	16V22-E	16V22-C	16SVM-12E
White	16V22-W	16V22-C	16SVM-12W
Red	16V22-R	16V22-C	16SVM-12R
Blue	16V22-B	16V22-C	16SVM-12B
Green	16V22-G	16V22-C	16SVM-12G
Yellow	16V22-Y	16V22-C	16SVM-12Y
Orange	16V22-O	16V22-C	16SVM-12O
Brown	16V22-H	16V22-C	16SVM-12H



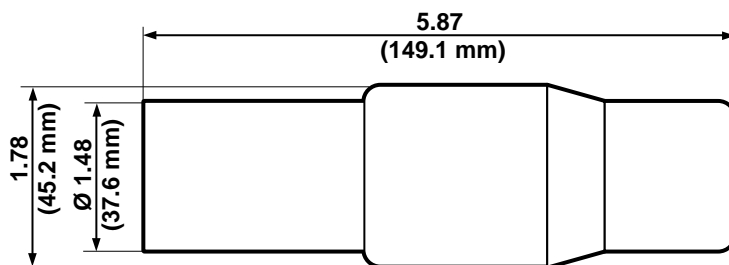
Female Vulcanized Plug—Crimped (Cable Size: 1/0–2/0)

COLOR	COMPLETE CAT. NO.	CONTACT CAT. NO.	INSULATOR CAT. NO.
Black	16V26-E	16V26-C	16SVF-12E
White	16V26-W	16V26-C	16SVF-12W
Red	16V26-R	16V26-C	16SVF-12R
Blue	16V26-B	16V26-C	16SVF-12B
Green	16V26-G	16V26-C	16SVF-12G
Yellow	16V26-Y	16V26-C	16SVF-12Y
Orange	16V26-O	16V26-C	16SVF-12O
Brown	16V26-H	16V26-C	16SVF-12H

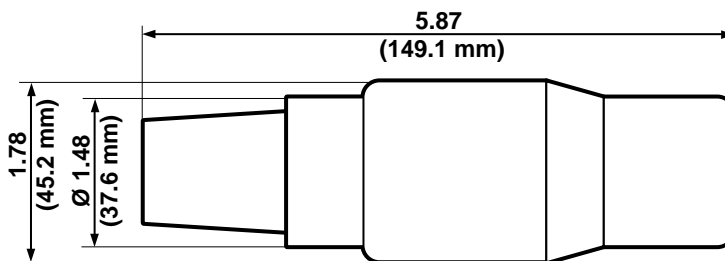


SPECIFICATIONS & FEATURES

- Leviton ECT 16 Series Taper Nose products are the connectors of choice for concerts, sound stages, movie making, television production, sporting events and conventions.



MALE VULCANIZED PLUG—CRIMPED
Cat. No. 16V22



FEMALE VULCANIZED PLUG—CRIMPED
Cat. No. 16V26

*Refer to Ampacity Chart for all cable sizes on page 2

16 Series — Taper Nose — Up to 400 AMP,* 600V



Heavy Duty Male Vulcanized Plug—Crimped (Cable Size: 1/0–2/0)

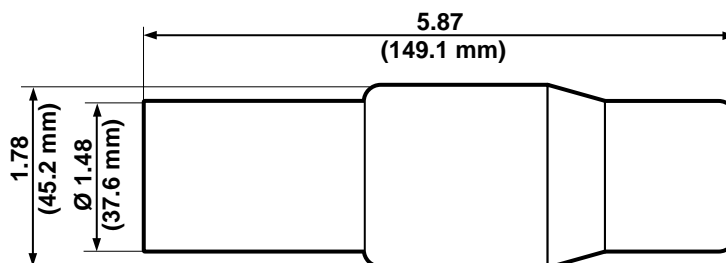
COLOR	COMPLETE CAT. NO.	CONTACT CAT. NO.	INSULATOR CAT. NO.
Black	16V23-E	16V23-C	16SVM-HDE
White	16V23-W	16V23-C	16SVM-HDW
Red	16V23-R	16V23-C	16SVM-HDR
Blue	16V23-B	16V23-C	16SVM-HDB
Green	16V23-G	16V23-C	16SVM-HDG
Yellow	16V23-Y	16V23-C	16SVM-HDY
Orange	16V23-O	16V23-C	16SVM-HDO
Brown	16V23-H	16V23-C	16SVM-HDH

Heavy Duty Female Vulcanized Plug—Crimped (Cable Size: 1/0–2/0)

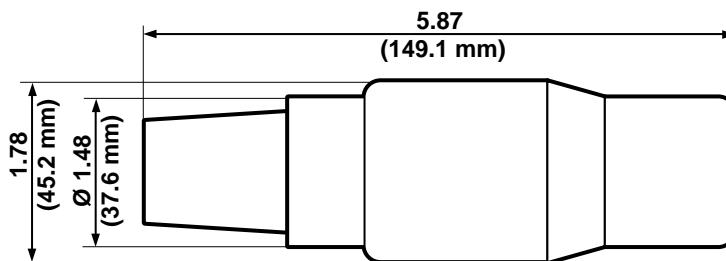
COLOR	COMPLETE CAT. NO.	CONTACT CAT. NO.	INSULATOR CAT. NO.
Black	16V27-E	16V27-C	16SVF-HDE
White	16V27-W	16V27-C	16SVF-HDW
Red	16V27-R	16V27-C	16SVF-HDR
Blue	16V27-B	16V27-C	16SVF-HDB
Green	16V27-G	16V27-C	16SVF-HDG
Yellow	16V27-Y	16V27-C	16SVF-HDY
Orange	16V27-O	16V27-C	16SVF-HDO
Brown	16V27-H	16V27-C	16SVF-HDH

SPECIFICATIONS & FEATURES

- Leviton ECT 16 Series Taper Nose products are the connectors of choice for concerts, sound stages, movie making, television production, sporting events and conventions.



HEAVY DUTY MALE VULCANIZED PLUG—CRIMPED
Cat. No. 16V23



HEAVY DUTY FEMALE VULCANIZED PLUG—CRIMPED
Cat. No. 16V27

*Refer to Ampacity Chart for all cable sizes on page 2

16 Series — Taper Nose — Up to 400 AMP,* 600V

Male Vulcanized Plug—Crimped (Cable Size: 3/0–4/0)

COLOR	COMPLETE CAT. NO.	CONTACT CAT. NO.	INSULATOR CAT. NO.
Black	16V24-E	16V24-C	16SVM-34E
White	16V24-W	16V24-C	16SVM-34W
Red	16V24-R	16V24-C	16SVM-34R
Blue	16V24-B	16V24-C	16SVM-34B
Green	16V24-G	16V24-C	16SVM-34G
Yellow	16V24-Y	16V24-C	16SVM-34Y
Orange	16V24-O	16V24-C	16SVM-34O
Brown	16V24-H	16V24-C	16SVM-34H



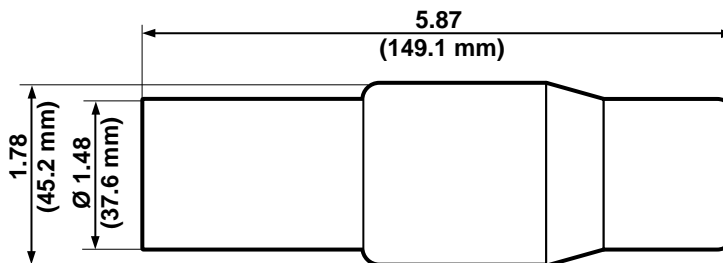
Female Vulcanized Plug—Crimped (Cable Size: 3/0–4/0)

COLOR	COMPLETE CAT. NO.	CONTACT CAT. NO.	INSULATOR CAT. NO.
Black	16V28-E	16V28-C	16SVF-34E
White	16V28-W	16V28-C	16SVF-34W
Red	16V28-R	16V28-C	16SVF-34R
Blue	16V28-B	16V28-C	16SVF-34B
Green	16V28-G	16V28-C	16SVF-34G
Yellow	16V28-Y	16V28-C	16SVF-34Y
Orange	16V28-O	16V28-C	16SVF-34O
Brown	16V28-H	16V28-C	16SVF-34H

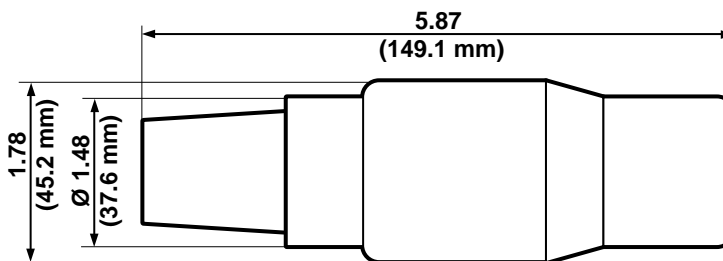


SPECIFICATIONS & FEATURES

- Leviton ECT 16 Series Taper Nose products are the connectors of choice for concerts, sound stages, movie making, television production, sporting events and conventions.



MALE VULCANIZED PLUG—CRIMPED
Cat. No. 16V24



FEMALE VULCANIZED PLUG—CRIMPED
Cat. No. 16V28

*Refer to Ampacity Chart for all cable sizes on page 2

16 Series — Taper Nose — Up to 400 AMP,* 600V



Female Terminal Connector (Cable Size: #2–4/0)

	ANGLE STYLE	OFFSET STYLE
COLOR	CAT. NO.	CAT. NO.
Black	16F21-E	16F22-E
White	16F21-W	16F22-W
Red	16F21-R	16F22-R
Blue	16F21-B	16F22-B
Green	16F21-G	16F22-G
Yellow	16F21-Y	16F22-Y
Orange	16F21-O	16F22-O
Brown	16F21-H	16F22-H

Panel Receptacle

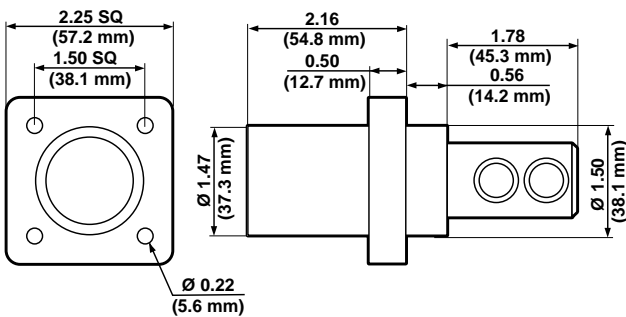
COLOR	DOUBLE SET SCREW STYLE (CABLE SIZE: 1/0–4/0)		THREADED STUD STYLE (CABLE SIZE: #2–4/0)	
	MALE CAT. NO.	FEMALE CAT. NO.	MALE CAT. NO.	FEMALE CAT. NO.
Black	16R21-E	16R22-E	16R23-E	16R24-E
White	16R21-W	16R22-W	16R23-W	16R24-W
Red	16R21-R	16R22-R	16R23-R	16R24-R
Blue	16R21-B	16R22-B	16R23-B	16R24-B
Green	16R21-G	16R22-G	16R23-G	16R24-G
Yellow	16R21-Y	16R22-Y	16R23-Y	16R24-Y
Orange	16R21-O	16R22-O	16R23-O	16R24-O
Brown	16R21-H	16R22-H	16R23-H	16R24-H

SPECIFICATIONS & FEATURES

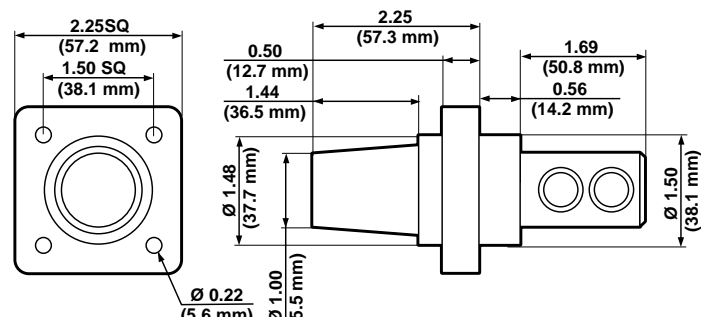
- Leviton ECT 16 Series Taper Nose products are the connectors of choice for concerts, sound stages, movie making, television production, sporting events and conventions.

TESTING & CODE COMPLIANCE (PANEL RECEPTACLES ONLY)

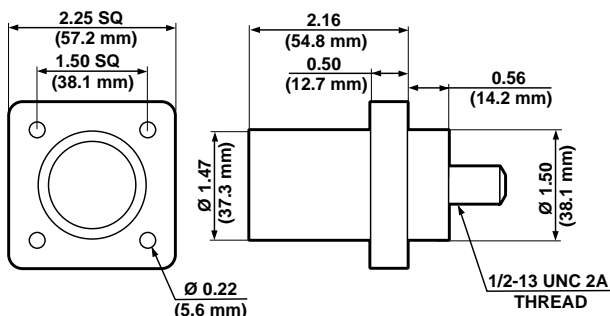
- UL Listed E-151429
- CSA Certified LR-76878-4
- NEMA 3R-Rated (Rainproof) for use outdoors



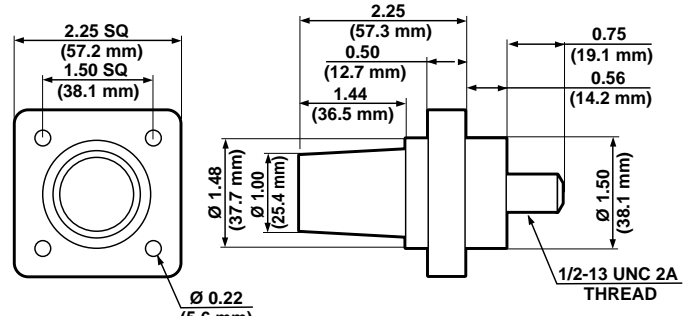
MALE DOUBLE SET SCREW PANEL RECEPTACLE
Cat. No. 16R21



FEMALE DOUBLE SET SCREW PANEL RECEPTACLE
Cat. No. 16R22



MALE THREADED STUD PANEL RECEPTACLE
Cat. No. 16R23



FEMALE THREADED STUD PANEL RECEPTACLE
Cat. No. 16R24

*Refer to Ampacity Chart for all cable sizes on page 2

16 Series — Taper Nose — Up to 400 AMP,* 600V

Multi-Way Connectors

	PARALLELING TEE FEMALE-MALE-MALE	TAPPING TEE FEMALE-FEMALE-MALE
COLOR	CAT. NO.	CAT. NO.
Black	16A21-E	16A22-E
White	16A21-W	16A22-W
Red	16A21-R	16A22-R
Blue	16A21-B	16A22-B
Green	16A21-G	16A22-G
Yellow	16A21-Y	16A22-Y
Orange	16A21-O	16A22-O
Brown	16A21-H	16A22-H



Multi-Way Connectors

	3-FER MALE-FEMALE-FEMALE-FEMALE	3-FER FEMALE-MALE-MALE-MALE
COLOR	CAT. NO.	CAT. NO.
Black	16A23-E	16A26-E
White	16A23-W	16A26-W
Red	16A23-R	16A26-R
Blue	16A23-B	16A26-B
Green	16A23-G	16A26-G
Yellow	16A23-Y	16A26-Y
Orange	16A23-O	16A26-O
Brown	16A23-H	16A26-H



Multi-Way Connectors

	DOUBLE FEMALE FEMALE-FEMALE	DOUBLE MALE MALE-MALE
COLOR	CAT. NO.	CAT. NO.
Black	16A24-E	16A25-E
White	16A24-W	16A25-W
Red	16A24-R	16A25-R
Blue	16A24-B	16A25-B
Green	16A24-G	16A25-G
Yellow	16A24-Y	16A25-Y
Orange	16A24-O	16A25-O
Brown	16A24-H	16A25-H

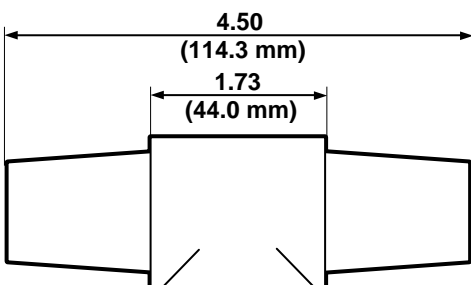


SPECIFICATIONS & FEATURES

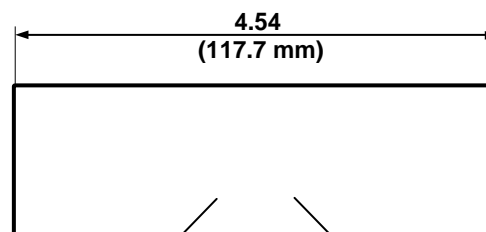
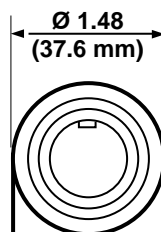
- Leviton ECT 16 Series Taper Nose products are the connectors of choice for concerts, sound stages, movie making, television production, sporting events and conventions.

TESTING & CODE COMPLIANCE

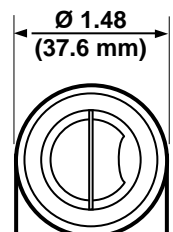
- UL Listed E-151429
- CSA Certified LR-76878-4
- NEMA 3R-Rated (Rainproof) for use outdoors



MULTI-WAY CONNECTOR—FEMALE TO FEMALE—Cat. No. 16A24



MULTI-WAY CONNECTOR—MALE TO MALE—Cat. No. 16A25



*Refer to Ampacity Chart for all cable sizes on page 2

18 Series — Ball Nose — Up to 400 AMP,* 600V



Male Detachable Plug—Single Set Screw (Cable Size: #2–2/0)

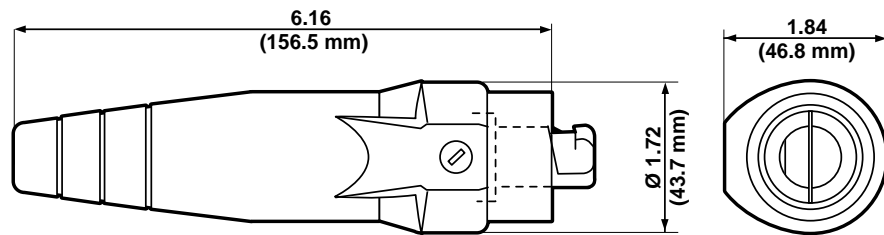
COLOR	COMPLETE CAT. NO.	CONTACT CAT. NO.	INSULATOR CAT. NO.
Black	18D21-E	18D21-C	18SDM-22E
White	18D21-W	18D21-C	18SDM-22W
Red	18D21-R	18D21-C	18SDM-22R
Blue	18D21-B	18D21-C	18SDM-22B
Green	18D21-G	18D21-C	18SDM-22G
Yellow	18D21-Y	18D21-C	18SDM-22Y
Orange	18D21-O	18D21-C	18SDM-22O
Brown	18D21-H	18D21-C	18SDM-22H

Female Detachable Plug—Single Set Screw (Cable Size: #2–2/0)

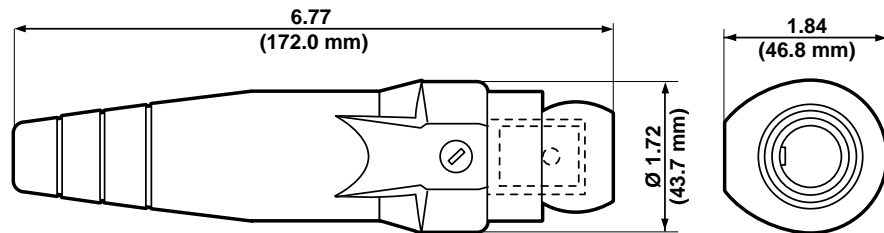
COLOR	COMPLETE CAT. NO.	CONTACT CAT. NO.	INSULATOR CAT. NO.
Black	18D29-E	18D29-C	18SDF-22E
White	18D29-W	18D29-C	18SDF-22W
Red	18D29-R	18D29-C	18SDF-22R
Blue	18D29-B	18D29-C	18SDF-22B
Green	18D29-G	18D29-C	18SDF-22G
Yellow	18D29-Y	18D29-C	18SDF-22Y
Orange	18D29-O	18D29-C	18SDF-22O
Brown	18D29-H	18D29-C	18SDF-22H

SPECIFICATIONS & FEATURES

- The 18 Series Ball Nose pin and sleeve type plugs, receptacles and connectors are used by the broadcast industry in Canada, as well as the welding industry in the United States



MALE DETACHABLE PLUG—SINGLE SET SCREW
Cat. No. 18D21



FEMALE DETACHABLE PLUG—SINGLE SET SCREW
Cat. No. 18D29

*Refer to Ampacity Chart for all cable sizes on page 2

18 Series — Ball Nose — Up to 400 AMP,* 600V

Male Detachable Plug—Single Set Screw (Cable Size: 1/0–4/0)

COLOR	COMPLETE CAT. NO.	CONTACT CAT. NO.	INSULATOR CAT. NO.
Black	18D23-E	18D23-C	18SDM-14E
White	18D23-W	18D23-C	18SDM-14W
Red	18D23-R	18D23-C	18SDM-14R
Blue	18D23-B	18D23-C	18SDM-14B
Green	18D23-G	18D23-C	18SDM-14G
Yellow	18D23-Y	18D23-C	18SDM-14Y
Orange	18D23-O	18D23-C	18SDM-14O
Brown	18D23-H	18D23-C	18SDM-14H



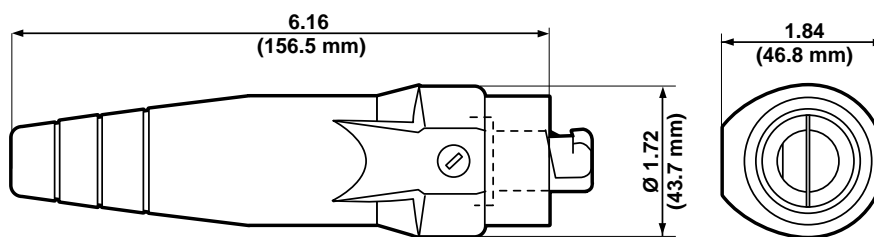
Female Detachable Plug—Single Set Screw (Cable Size: 1/0–4/0)

COLOR	COMPLETE CAT. NO.	CONTACT CAT. NO.	INSULATOR CAT. NO.
Black	18D32-E	18D32-C	18SDF-14E
White	18D32-W	18D32-C	18SDF-14W
Red	18D32-R	18D32-C	18SDF-14R
Blue	18D32-B	18D32-C	18SDF-14B
Green	18D32-G	18D32-C	18SDF-14G
Yellow	18D32-Y	18D32-C	18SDF-14Y
Orange	18D32-O	18D32-C	18SDF-14O
Brown	18D32-H	18D32-C	18SDF-14H

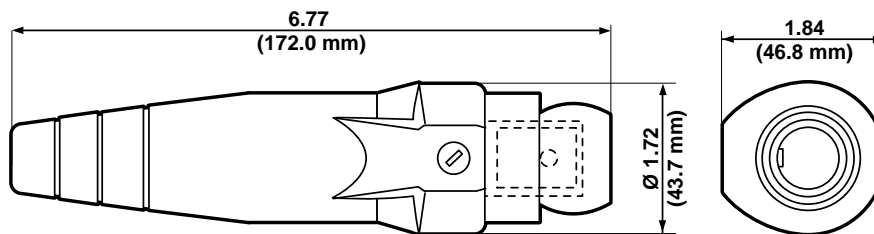


SPECIFICATIONS & FEATURES

- The 18 Series Ball Nose pin and sleeve type plugs, receptacles and connectors are used by the broadcast industry in Canada, as well as the welding industry in the United States



MALE DETACHABLE PLUG—SINGLE SET SCREW
Cat. No. 18D23



FEMALE DETACHABLE PLUG—SINGLE SET SCREW
Cat. No. 18D32

*Refer to Ampacity Chart for all cable sizes on page 2

18 Series — Ball Nose — Up to 400 AMP,* 600V



Male Detachable Plug—Double Set Screw (Cable Size: #2–2/0)

COLOR	COMPLETE CAT. NO.	CONTACT CAT. NO.	INSULATOR CAT. NO.
Black	18D22-E	18D22-C	18SDM-22E
White	18D22-W	18D22-C	18SDM-22W
Red	18D22-R	18D22-C	18SDM-22R
Blue	18D22-B	18D22-C	18SDM-22B
Green	18D22-G	18D22-C	18SDM-22G
Yellow	18D22-Y	18D22-C	18SDM-22Y
Orange	18D22-O	18D22-C	18SDM-22O
Brown	18D22-H	18D22-C	18SDM-22H

Female Detachable Plug—Double Set Screw (Cable Size: #2–2/0)

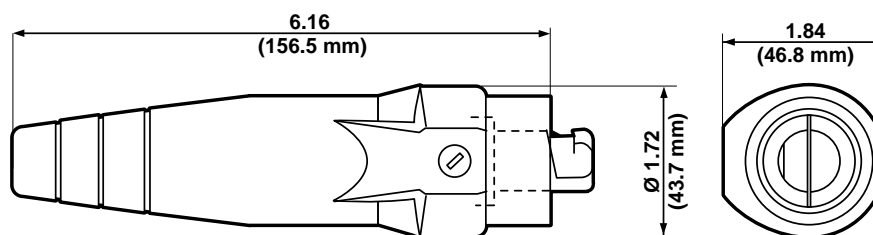
COLOR	COMPLETE CAT. NO.	CONTACT CAT. NO.	INSULATOR CAT. NO.
Black	18D31-E	18D31-C	18SDF-22E
White	18D31-W	18D31-C	18SDF-22W
Red	18D31-R	18D31-C	18SDF-22R
Blue	18D31-B	18D31-C	18SDF-22B
Green	18D31-G	18D31-C	18SDF-22G
Yellow	18D31-Y	18D31-C	18SDF-22Y
Orange	18D31-O	18D31-C	18SDF-22O
Brown	18D31-H	18D31-C	18SDF-22H

SPECIFICATIONS & FEATURES

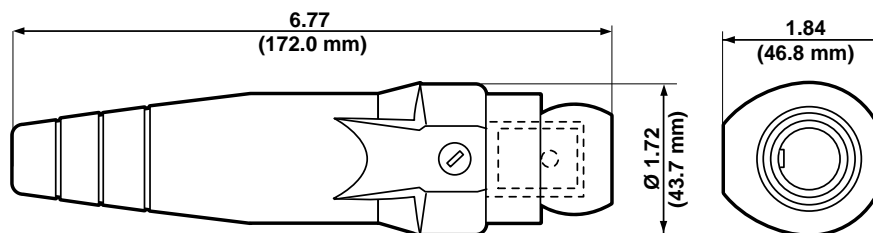
- The 18 Series Ball Nose pin and sleeve type plugs, receptacles and connectors are used by the broadcast industry in Canada, as well as the welding industry in the United States

TESTING & CODE COMPLIANCE

- UL Listed E-151429
- CSA Certified LR-76878-4



MALE DETACHABLE PLUG—DOUBLE SET SCREW
Cat. No. 18D22



FEMALE DETACHABLE PLUG—DOUBLE SET SCREW
Cat. No. 18D31

*Refer to Ampacity Chart for all cable sizes on page 2

18 Series — Ball Nose — Up to 400 AMP,* 600V

Male Detachable Plug—Double Set Screw (Cable Size: 1/0–4/0)

COLOR	COMPLETE CAT. NO.	CONTACT CAT. NO.	INSULATOR CAT. NO.
Black	18D24-E	18D24-C	18SDM-14E
White	18D24-W	18D24-C	18SDM-14W
Red	18D24-R	18D24-C	18SDM-14R
Blue	18D24-B	18D24-C	18SDM-14B
Green	18D24-G	18D24-C	18SDM-14G
Yellow	18D24-Y	18D24-C	18SDM-14Y
Orange	18D24-O	18D24-C	18SDM-14O
Brown	18D24-H	18D24-C	18SDM-14H



Female Detachable Plug—Double Set Screw (Cable Size: 1/0–4/0)

COLOR	COMPLETE CAT. NO.	CONTACT CAT. NO.	INSULATOR CAT. NO.
Black	18D33-E	18D33-C	18SDF-14E
White	18D33-W	18D33-C	18SDF-14W
Red	18D33-R	18D33-C	18SDF-14R
Blue	18D33-B	18D33-C	18SDF-14B
Green	18D33-G	18D33-C	18SDF-14G
Yellow	18D33-Y	18D33-C	18SDF-14Y
Orange	18D33-O	18D33-C	18SDF-14O
Brown	18D33-H	18D33-C	18SDF-14H

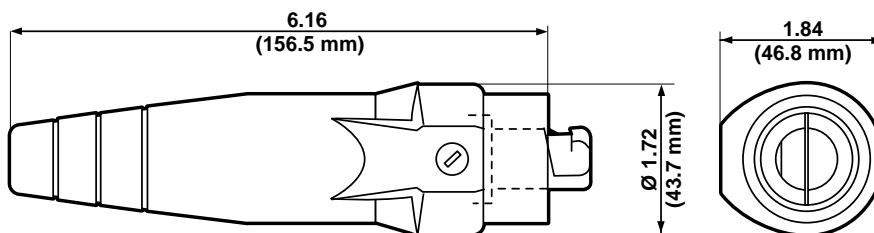


SPECIFICATIONS & FEATURES

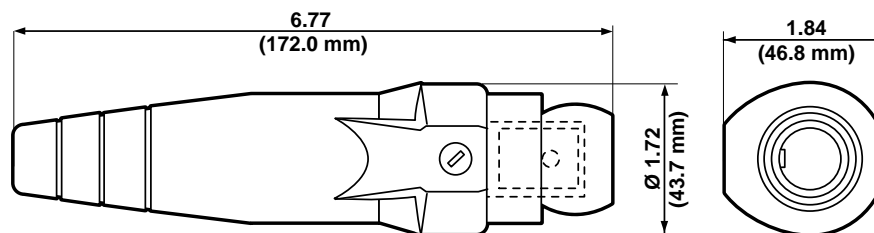
- The 18 Series Ball Nose pin and sleeve type plugs, receptacles and connectors are used by the broadcast industry in Canada, as well as the welding industry in the United States

TESTING & CODE COMPLIANCE

- UL Listed E-151429
- CSA Certified LR-76878-4



MALE DETACHABLE PLUG—DOUBLE SET SCREW
Cat. No. 18D24



FEMALE DETACHABLE PLUG—DOUBLE SET SCREW
Cat. No. 18D33

*Refer to Ampacity Chart for all cable sizes on page 2

18 Series — Ball Nose — Up to 400 AMP,* 600V



Male Detachable Plug—Crimped (Cable Size: #2–#1)

COLOR	COMPLETE CAT. NO.	CONTACT CAT. NO.	INSULATOR CAT. NO.
Black	18D25-E	18D25-C	18SDM-22E
White	18D25-W	18D25-C	18SDM-22W
Red	18D25-R	18D25-C	18SDM-22R
Blue	18D25-B	18D25-C	18SDM-22B
Green	18D25-G	18D25-C	18SDM-22G
Yellow	18D25-Y	18D25-C	18SDM-22Y
Orange	18D25-O	18D25-C	18SDM-22O
Brown	18D25-H	18D25-C	18SDM-22H

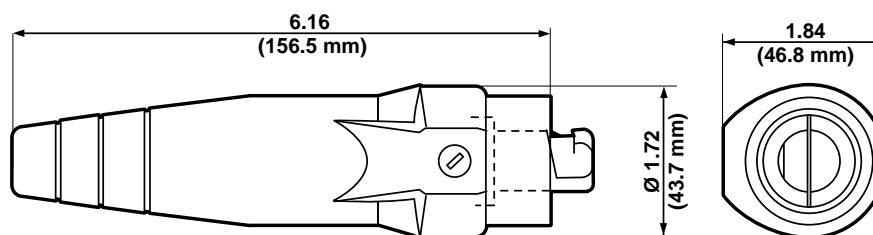


Female Detachable Plug—Crimped (Cable Size: #2–#1)

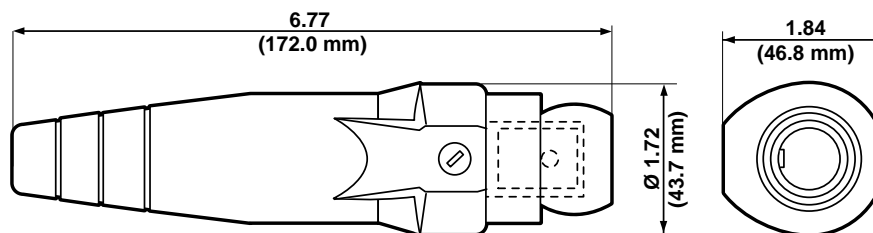
COLOR	COMPLETE CAT. NO.	CONTACT CAT. NO.	INSULATOR CAT. NO.
Black	18D34-E	18D34-C	18SDF-22E
White	18D34-W	18D34-C	18SDF-22W
Red	18D34-R	18D34-C	18SDF-22R
Blue	18D34-B	18D34-C	18SDF-22B
Green	18D34-G	18D34-C	18SDF-22G
Yellow	18D34-Y	18D34-C	18SDF-22Y
Orange	18D34-O	18D34-C	18SDF-22O
Brown	18D34-H	18D34-C	18SDF-22H

SPECIFICATIONS & FEATURES

- The 18 Series Ball Nose pin and sleeve type plugs, receptacles and connectors are used by the broadcast industry in Canada, as well as the welding industry in the United States



MALE DETACHABLE PLUG—CRIMPED
Cat. No. 18D25



FEMALE DETACHABLE PLUG—CRIMPED
Cat. No. 18D34

*Refer to Ampacity Chart for all cable sizes on page 2

18 Series — Ball Nose — Up to 400 AMP,* 600V

Male Detachable Plug—Crimped (Cable Size: 1/0–2/0)

COLOR	COMPLETE CAT. NO.	CONTACT CAT. NO.	INSULATOR CAT. NO.
Black	18D26-E	18D26-C	18SDM-22E
White	18D26-W	18D26-C	18SDM-22W
Red	18D26-R	18D26-C	18SDM-22R
Blue	18D26-B	18D26-C	18SDM-22B
Green	18D26-G	18D26-C	18SDM-22G
Yellow	18D26-Y	18D26-C	18SDM-22Y
Orange	18D26-O	18D26-C	18SDM-22O
Brown	18D26-H	18D26-C	18SDM-22H



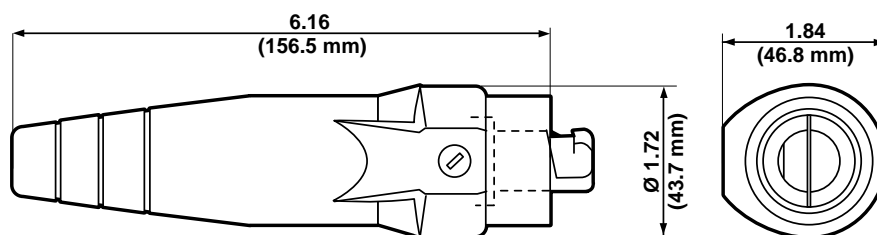
Female Detachable Plug—Crimped (Cable Size: 1/0–2/0)

COLOR	COMPLETE CAT. NO.	CONTACT CAT. NO.	INSULATOR CAT. NO.
Black	18D35-E	18D35-C	18SDF-22E
White	18D35-W	18D35-C	18SDF-22W
Red	18D35-R	18D35-C	18SDF-22R
Blue	18D35-B	18D35C	18SDF-22B
Green	18D35-G	18D35-C	18SDF-22G
Yellow	18D35-Y	18D35-C	18SDF-22Y
Orange	18D35-O	18D35-C	18SDF-22O
Brown	18D35-H	18D35-C	18SDF-22H

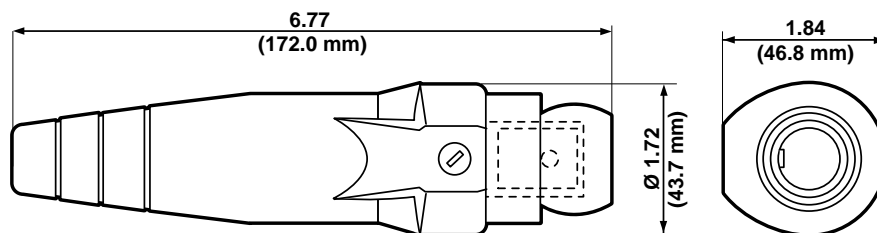


SPECIFICATIONS & FEATURES

- The 18 Series Ball Nose pin and sleeve type plugs, receptacles and connectors are used by the broadcast industry in Canada, as well as the welding industry in the United States



MALE DETACHABLE PLUG—CRIMPED
Cat. No. 18D26



FEMALE DETACHABLE PLUG—CRIMPED
Cat. No. 18D35

*Refer to Ampacity Chart for all cable sizes on page 2

18 Series — Ball Nose — Up to 400 AMP,* 600V



Male Detachable Plug—Crimped (Cable Size: 3/0–4/0)

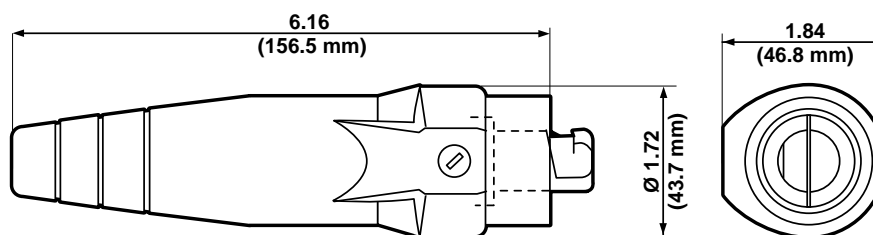
COLOR	COMPLETE CAT. NO.	CONTACT CAT. NO.	INSULATOR CAT. NO.
Black	18D28-E	18D28-C	18SDM-14E
White	18D28-W	18D28-C	18SDM-14W
Red	18D28-R	18D28-C	18SDM-14R
Blue	18D28-B	18D28-C	18SDM-14B
Green	18D28-G	18D28-C	18SDM-14G
Yellow	18D28-Y	18D28-C	18SDM-14Y
Orange	18D28-O	18D28-C	18SDM-14O
Brown	18D28-H	18D28-C	18SDM-14H

Female Detachable Plug—Crimped (Cable Size: #3/0–#4/0)

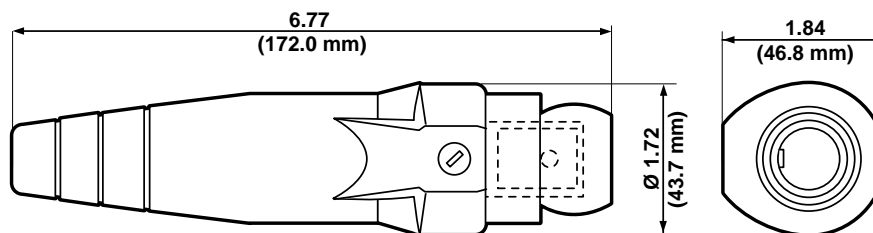
COLOR	COMPLETE CAT. NO.	CONTACT CAT. NO.	INSULATOR CAT. NO.
Black	18D37-E	18D37-C	18SDF-14E
White	18D37-W	18D37-C	18SDF-14W
Red	18D37-R	18D37-C	18SDF-14R
Blue	18D37-B	18D37-C	18SDF-14B
Green	18D37-G	18D37-C	18SDF-14G
Yellow	18D37-Y	18D37-C	18SDF-14Y
Orange	18D37-O	18D37-C	18SDF-14O
Brown	18D37-H	18D37-C	18SDF-14H

SPECIFICATIONS & FEATURES

- The 18 Series Ball Nose pin and sleeve type plugs, receptacles and connectors are used by the broadcast industry in Canada, as well as the welding industry in the United States



MALE DETACHABLE PLUG—CRIMPED
Cat. No. 18D28



FEMALE DETACHABLE PLUG—CRIMPED
Cat. No. 18D37

*Refer to Ampacity Chart for all cable sizes on page 2

18 Series — Ball Nose — Up to 400 AMP,* 600V

Heavy Duty Male Detachable Plug—Crimped (Cable Size: 1/0–2/0)

COLOR	COMPLETE CAT. NO.	CONTACT CAT. NO.	INSULATOR CAT. NO.
Black	18D27-E	18D27-C	18SDM-HDE
White	18D27-W	18D27-C	18SDM-HDW
Red	18D27-R	18D27-C	18SDM-HDR
Blue	18D27-B	18D27-C	18SDM-HDB
Green	18D27-G	18D27-C	18SDM-HDG
Yellow	18D27-Y	18D27-C	18SDM-HDY
Orange	18D27-O	18D27-C	18SDM-HDO
Brown	18D27-H	18D27-C	18SDM-HDH



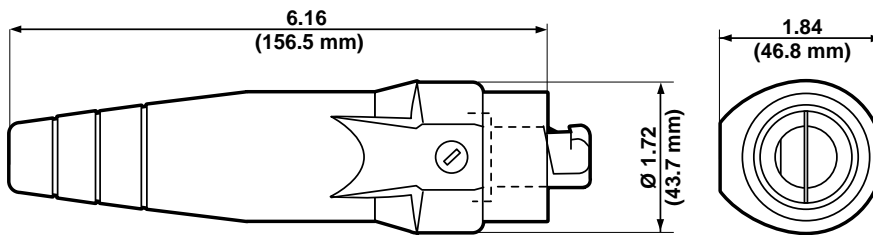
Heavy Duty Female Detachable Plug—Crimped (Cable Size: 1/0–2/0)

COLOR	COMPLETE CAT. NO.	CONTACT CAT. NO.	INSULATOR CAT. NO.
Black	18D36-E	18D36-C	18SDF-HDE
White	18D36-W	18D36-C	18SDF-HDW
Red	18D36-R	18D36-C	18SDF-HDR
Blue	18D36-B	18D36C	18SDF-HDB
Green	18D36-G	18D36-C	18SDF-HDG
Yellow	18D36-Y	18D36-C	18SDF-HDY
Orange	18D36-O	18D36-C	18SDF-HDO
Brown	18D36-H	18D36-C	18SDF-HDH

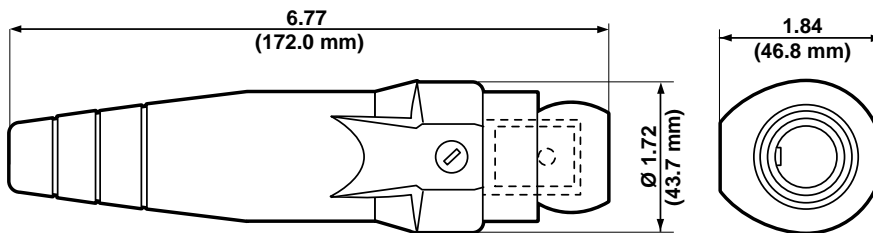


SPECIFICATIONS & FEATURES

- The 18 Series Ball Nose pin and sleeve type plugs, receptacles and connectors are used by the broadcast industry in Canada, as well as the welding industry in the United States



HEAVY DUTY MALE DETACHABLE PLUG—CRIMPED
Cat. No. 18D27



HEAVY DUTY FEMALE DETACHABLE PLUG—CRIMPED
Cat. No. 18D36

*Refer to Ampacity Chart for all cable sizes on page 2

18 Series — Ball Nose — Up to 400 AMP,* 600V



Male Vulcanized Plug—Crimped (Cable Size: #2–#1)

COLOR	COMPLETE CAT. NO.	CONTACT CAT. NO.	INSULATOR CAT. NO.
Black	18V21-E	18V21-C	18SVM-21E
White	18V21-W	18V21-C	18SVM-21W
Red	18V21-R	18V21-C	18SVM-21R
Blue	18V21-B	18V21-C	18SVM-21B
Green	18V21-G	18V21-C	18SVM-21G
Yellow	18V21-Y	18V21-C	18SVM-21Y
Orange	18V21-O	18V21-C	18SVM-21O
Brown	18V21-H	18V21-C	18SVM-21H

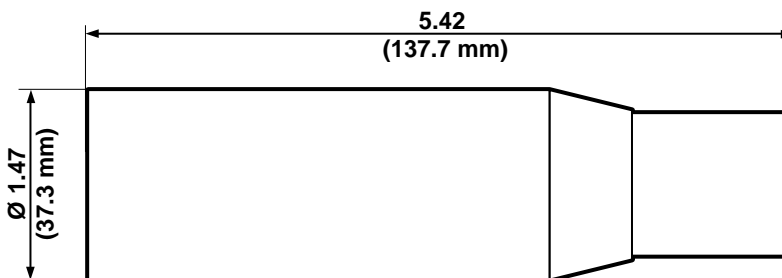


Female Vulcanized Plug—Crimped (Cable Size: #2–#1)

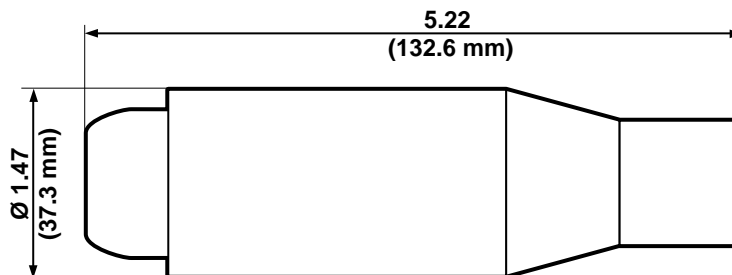
COLOR	COMPLETE CAT. NO.	CONTACT CAT. NO.	INSULATOR CAT. NO.
Black	18V25-E	18V25-C	18SVF-21E
White	18V25-W	18V25-C	18SVF-21W
Red	18V25-R	18V25-C	18SVF-21R
Blue	18V25-B	18V25-C	18SVF-21B
Green	18V25-G	18V25-C	18SVF-21G
Yellow	18V25-Y	18V25-C	18SVF-21Y
Orange	18V25-O	18V25-C	18SVF-21O
Brown	18V25-H	18V25-C	18SVF-21H

SPECIFICATIONS & FEATURES

- The 18 Series Ball Nose pin and sleeve type plugs, receptacles and connectors are used by the broadcast industry in Canada, as well as the welding industry in the United States



MALE VULCANIZED PLUG—CRIMPED
Cat. No. 18V21



FEMALE VULCANIZED PLUG—CRIMPED
Cat. No. 18V25

*Refer to Ampacity Chart for all cable sizes on page 2

18 Series — Ball Nose — Up to 400 AMP,* 600V

Male Vulcanized Plug—Crimped (Cable Size: 1/0–2/0)

COLOR	COMPLETE CAT. NO.	CONTACT CAT. NO.	INSULATOR CAT. NO.
Black	18V22-E	18V22-C	18SVM-12E
White	18V22-W	18V22-C	18SVM-12W
Red	18V22-R	18V22-C	18SVM-12R
Blue	18V22-B	18V22-C	18SVM-12B
Green	18V22-G	18V22-C	18SVM-12G
Yellow	18V22-Y	18V22-C	18SVM-12Y
Orange	18V22-O	18V22-C	18SVM-12O
Brown	18V22-H	18V22-C	18SVM-12H



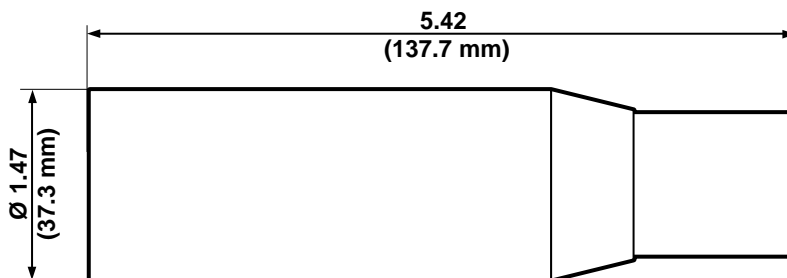
Female Vulcanized Plug—Crimped (Cable Size: 1/0–2/0)

COLOR	COMPLETE CAT. NO.	CONTACT CAT. NO.	INSULATOR CAT. NO.
Black	18V26-E	18V26-C	18SVF-12E
White	18V26-W	18V26-C	18SVF-12W
Red	18V26-R	18V26-C	18SVF-12R
Blue	18V26-B	18V26C	18SVF-12B
Green	18V26-G	18V26-C	18SVF-12G
Yellow	18V26-Y	18V26-C	18SVF-12Y
Orange	18V26-O	18V26-C	18SVF-12O
Brown	18V26-H	18V26-C	18SVF-12H

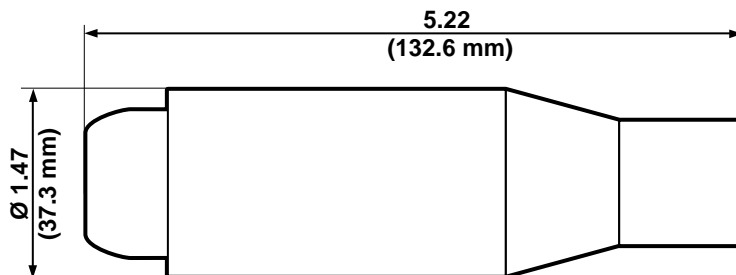


SPECIFICATIONS & FEATURES

- The 18 Series Ball Nose pin and sleeve type plugs, receptacles and connectors are used by the broadcast industry in Canada, as well as the welding industry in the United States



MALE VULCANIZED PLUG—CRIMPED
Cat. No. 18V22



FEMALE VULCANIZED PLUG—CRIMPED
Cat. No. 18V26

*Refer to Ampacity Chart for all cable sizes on page 2

18 Series — Ball Nose — Up to 400 AMP,* 600V



18V23-O



18V27-E

SPECIFICATIONS & FEATURES

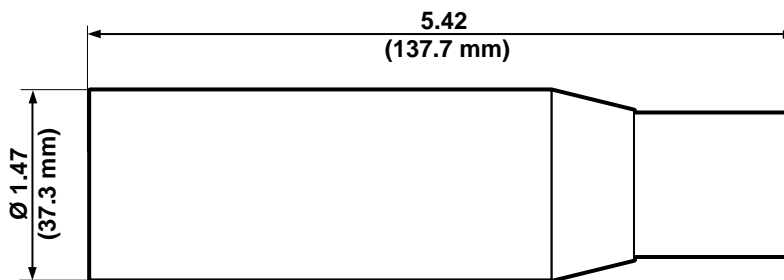
- The 18 Series Ball Nose pin and sleeve type plugs, receptacles and connectors are used by the broadcast industry in Canada, as well as the welding industry in the United States

Heavy Duty Male Vulcanized Plug—Crimped (Cable Size: 1/0-2/0)

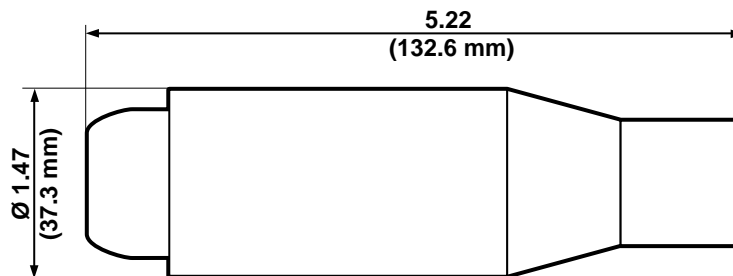
COLOR	COMPLETE CAT. NO.	CONTACT CAT. NO.	INSULATOR CAT. NO.
Black	18V23-E	18V23-C	18SVM-HDE
White	18V23-W	18V23-C	18SVM-HDW
Red	18V23-R	18V23-C	18SVM-HDR
Blue	18V23-B	18V23-C	18SVM-HDB
Green	18V23-G	18V23-C	18SVM-HDG
Yellow	18V23-Y	18V23-C	18SVM-HDY
Orange	18V23-O	18V23-C	18SVM-HDO
Brown	18V23-H	18V23-C	18SVM-HDH

Heavy Duty Female Vulcanized Plug—Crimped (Cable Size: 1/0-2/0)

COLOR	COMPLETE CAT. NO.	CONTACT CAT. NO.	INSULATOR CAT. NO.
Black	18V27-E	18V27-C	18SVF-HDE
White	18V27-W	18V27-C	18SVF-HDW
Red	18V27-R	18V27-C	18SVF-HDR
Blue	18V27-B	18V27-C	18SVF-HDB
Green	18V27-G	18V27-C	18SVF-HDG
Yellow	18V27-Y	18V27-C	18SVF-HDY
Orange	18V27-O	18V27-C	18SVF-HDO
Brown	18V27-H	18V27-C	18SVF-HDH



HEAVY DUTY MALE VULCANIZED PLUG—CRIMPED
Cat. No. 18V23



HEAVY DUTY FEMALE VULCANIZED PLUG—CRIMPED
Cat. No. 18V27

*Refer to Ampacity Chart for all cable sizes on page 2

18 Series — Ball Nose — Up to 400 AMP,* 600V

Male Vulcanized Plug—Crimped (Cable Size: 3/0–4/0)

COLOR	COMPLETE CAT. NO.	CONTACT CAT. NO.	INSULATOR CAT. NO.
Black	18V24-E	18V24-C	18SVM-34E
White	18V24-W	18V24-C	18SVM-34W
Red	18V24-R	18V24-C	18SVM-34R
Blue	18V24-B	18V24-C	18SVM-34B
Green	18V24-G	18V24-C	18SVM-34G
Yellow	18V24-Y	18V24-C	18SVM-34Y
Orange	18V24-O	18V24-C	18SVM-34O
Brown	18V24-H	18V24-C	18SVM-34H



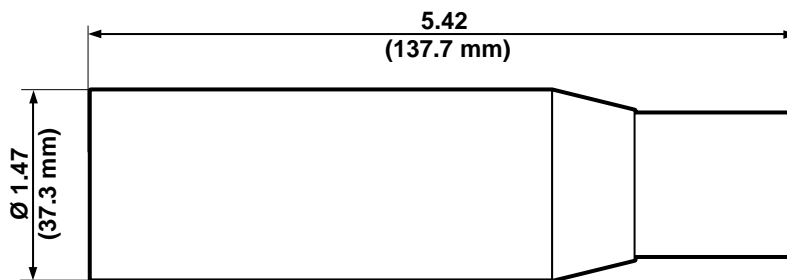
Female Vulcanized Plug—Crimped (Cable Size: 3/0–4/0)

COLOR	COMPLETE CAT. NO.	CONTACT CAT. NO.	INSULATOR CAT. NO.
Black	18V28-E	18V28-C	18SVF-34E
White	18V28-W	18V28-C	18SVF-34W
Red	18V28-R	18V28-C	18SVF-34R
Blue	18V28-B	18V28C	18SVF-34B
Green	18V28-G	18V28-C	18SVF-34G
Yellow	18V28-Y	18V28-C	18SVF-34Y
Orange	18V28-O	18V28-C	18SVF-34O
Brown	18V28-H	18V28-C	18SVF-34H

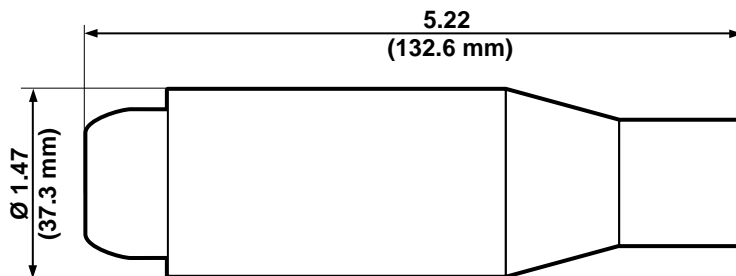


SPECIFICATIONS & FEATURES

- The 18 Series Ball Nose pin and sleeve type plugs, receptacles and connectors are used by the broadcast industry in Canada, as well as the welding industry in the United States



MALE VULCANIZED PLUG—CRIMPED
Cat. No. 18V24



FEMALE VULCANIZED PLUG—CRIMPED
Cat. No. 18V28

*Refer to Ampacity Chart for all cable sizes on page 2

18 Series — Ball Nose — Up to 400 AMP,* 600V

Female Terminal Connector (Cable Size: #2–4/0)



	ANGLE STYLE	OFFSET STYLE
COLOR	CAT. NO.	CAT. NO.
Black	18F21-E	18F22-E
White	18F21-W	18F22-W
Red	18F21-R	18F22-R
Blue	18F21-B	18F22-B
Green	18F21-G	18F22-G
Yellow	18F21-Y	18F22-Y
Orange	18F21-O	18F22-O
Brown	18F21-H	18F22-H

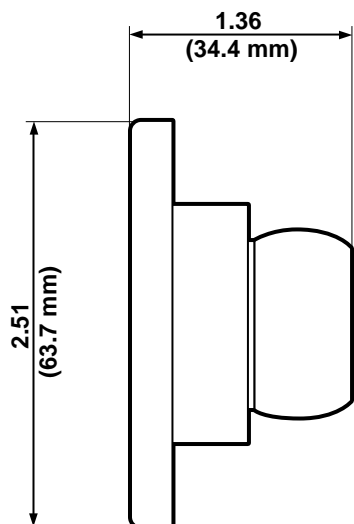


Protective Caps

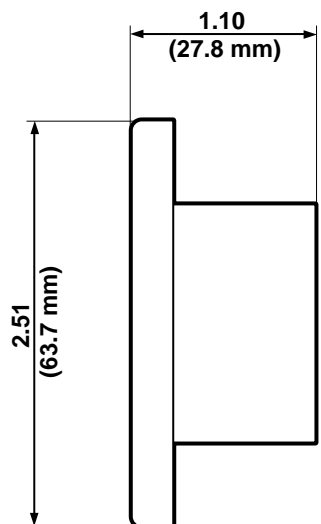
	MALE	FEMALE
COLOR	CAT. NO.	CAT. NO.
Black	18P21-E	18P22-E
White	18P21-W	18P22-W
Red	18P21-R	18P22-R
Blue	18P21-B	18P22-B
Green	18P21-G	18P22-G
Yellow	18P21-Y	18P22-Y
Orange	18P21-O	18P22-O
Brown	18P21-H	18P22-H

SPECIFICATIONS & FEATURES

- The 18 Series Ball Nose pin and sleeve type plugs, receptacles and connectors are used by the broadcast industry in Canada, as well as the welding industry in the United States



MALE PROTECTIVE CAP
Cat. No. 18P21



FEMALE PROTECTIVE CAP
Cat. No. 18P22

*Refer to Ampacity Chart for all cable sizes on page 2

18 Series — Ball Nose — Up to 400 AMP,* 600V

Panel Receptacle

COLOR	THREADED STUD STYLE (CABLE SIZE: #2-4/0)		DOUBLE SET SCREW STYLE (CABLE SIZE: 1/0-4/0)	
	MALE	FEMALE	MALE	FEMALE
Black	18R21-E	18R22-E	18R23-E	18R24-E
White	18R21-W	18R22-W	18R23-W	18R24-W
Red	18R21-R	18R22-R	18R23-R	18R24-R
Blue	18R21-B	18R22-B	18R23-B	18R24-B
Green	18R21-G	18R22-G	18R23-G	18R24-G
Yellow	18R21-Y	18R22-Y	18R23-Y	18R24-Y
Orange	18R21-O	18R22-O	18R23-O	18R24-O
Brown	18R21-H	18R22-H	18R23-H	18R24-H



Three-Way Lay Down "T" Connectors

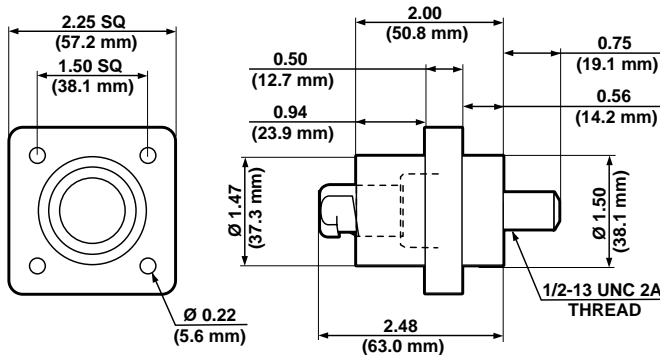
COLOR	PARALLELING TEE FEMALE-MALE-MALE	TAPPING TEE FEMALE-FEMALE-MALE
	CAT. NO.	CAT. NO.
Black	18A21-E	18A22-E
White	18A21-W	18A22-W
Red	18A21-R	18A22-R
Blue	18A21-B	18A22-B
Green	18A21-G	18A22-G
Yellow	18A21-Y	18A22-Y
Orange	18A21-O	18A22-O
Brown	18A21-H	18A22-H

SPECIFICATIONS & FEATURES

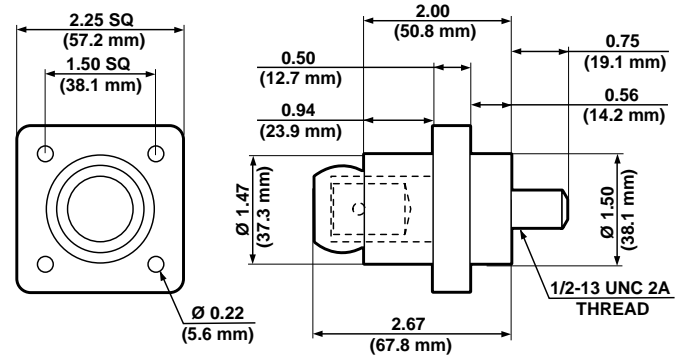
- The 18 Series Ball Nose pin and sleeve type plugs, receptacles and connectors are used by the broadcast industry in Canada, as well as the welding industry in the United States

TESTING & CODE COMPLIANCE

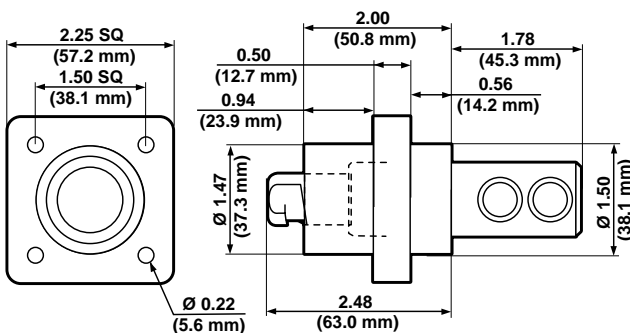
- UL Listed E-151429
- CSA Certified LR-76878-4



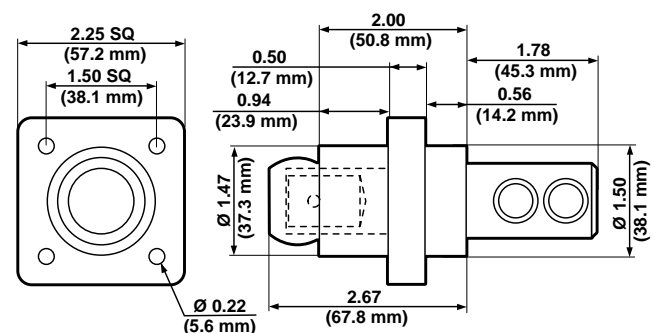
MALE THREADED STUD PANEL RECEPTACLE—Cat. No. 18R21



FEMALE THREADED STUD PANEL RECEPTACLE—Cat. No. 18R22



MALE DOUBLE SET SCREW PANEL RECEPTACLE—Cat. No. 18R23



FEMALE DOUBLE SET SCREW PANEL RECEPTACLE—Cat. No. 18R24

*Refer to Ampacity Chart for all cable sizes on page 2

18 Series — Ball Nose — Up to 400 AMP,* 600V



18A23-E

Multi-Way Connectors

	3-FER MALE-FEMALE-FEMALE-FEMALE	3-FER FEMALE-MALE-MALE-MALE
COLOR	CAT. NO.	CAT. NO.
Black	18A23-E	18A26-E
White	18A23-W	18A26-W
Red	18A23-R	18A26-R
Blue	18A23-B	18A26-B
Green	18A23-G	18A26-G
Yellow	18A23-Y	18A26-Y
Orange	18A23-O	18A26-O
Brown	18A23-H	18A26-H



18A25-E

Multi-Way Connectors

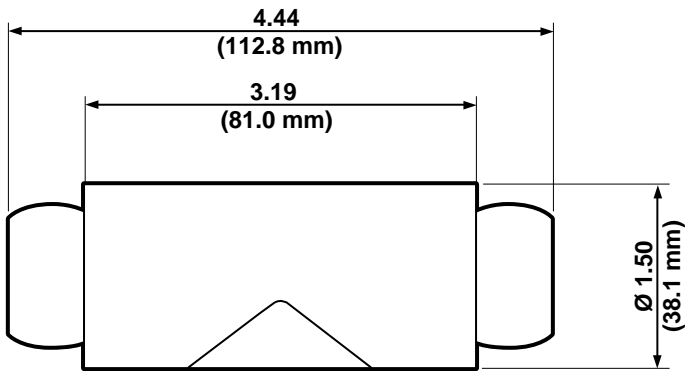
	DOUBLE FEMALE FEMALE-FEMALE	DOUBLE MALE MALE-MALE
COLOR	CAT. NO.	CAT. NO.
Black	18A24-E	18A25-E
White	18A24-W	18A25-W
Red	18A24-R	18A25-R
Blue	18A24-B	18A25-B
Green	18A24-G	18A25-G
Yellow	18A24-Y	18A25-Y
Orange	18A24-O	18A25-O
Brown	18A24-H	18A25-H

SPECIFICATIONS & FEATURES

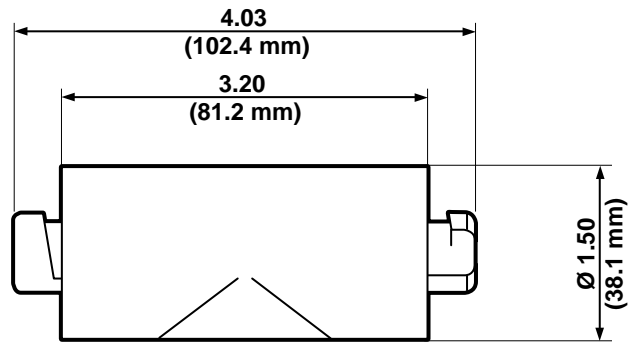
- The 18 Series Ball Nose pin and sleeve type plugs, receptacles and connectors are used by the broadcast industry in Canada, as well as the welding industry in the United States

TESTING & CODE COMPLIANCE

- UL Listed E-151429
- CSA Certified LR-76878-4



MULTI-WAY CONNECTOR—FEMALE TO FEMALE
Cat. No. 18A24



MULTI-WAY CONNECTOR—MALE TO MALE
Cat. No. 18A25

*Refer to Ampacity Chart for all cable sizes on page 2

17 Series — Taper Nose — Up to 690 AMP,* 600V

Male Detachable Plug—Double Set Screw (Cable Size: 250–350MCM)

COLOR	COMPLETE CAT. NO.	CONTACT CAT. NO.	INSULATOR CAT. NO.
Black	17D21-E	17D21-C	17SDM-E
White	17D21-W	17D21-C	17SDM-W
Red	17D21-R	17D21-C	17SDM-R
Blue	17D21-B	17D21-C	17SDM-B
Green	17D21-G	17D21-C	17SDM-G
Yellow	17D21-Y	17D21-C	17SDM-Y
Orange	17D21-O	17D21-C	17SDM-O
Brown	17D21-H	17D21-C	17SDM-H



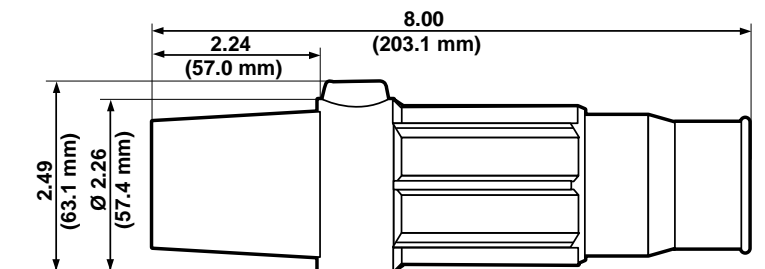
Female Detachable Plug—Double Set Screw (Cable Size: 250–350MCM)

COLOR	COMPLETE CAT. NO.	CONTACT CAT. NO.	INSULATOR CAT. NO.
Black	17D23-E	17D23-C	17SDF-E
White	17D23-W	17D23-C	17SDF-W
Red	17D23-R	17D23-C	17SDF-R
Blue	17D23-B	17D23-C	17SDF-B
Green	17D23-G	17D23-C	17SDF-G
Yellow	17D23-Y	17D23-C	17SDF-Y
Orange	17D23-O	17D23-C	17SDF-O
Brown	17D23-H	17D23-C	17SDF-H

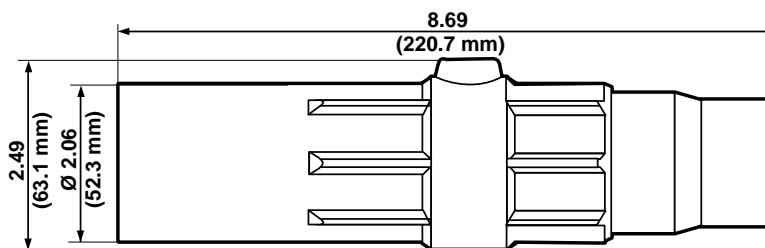


SPECIFICATIONS & FEATURES

- The 17 Series Taper Nose connectors withstand grueling, heavy-duty industrial use. Applications include generator test stations, water purification plants, electrochemical machining equipment and other general industrial uses.



MALE DETACHABLE PLUG—DOUBLE SET SCREW
Cat. No. 17D21



FEMALE DETACHABLE PLUG—DOUBLE SET SCREW
Cat. No. 17D23

*Refer to Ampacity Chart for all cable sizes on page 2

17 Series — Taper Nose — Up to 690 AMP,* 600V



17V21-H



17V24-R

SPECIFICATIONS & FEATURES

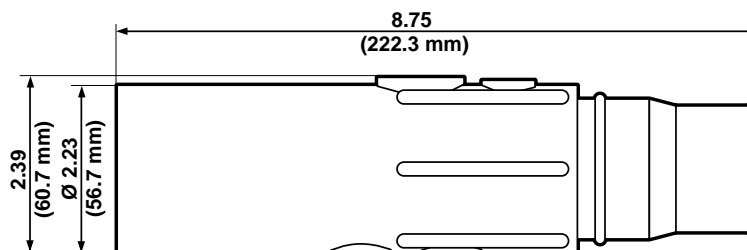
- The 17 Series Taper Nose connectors withstand grueling, heavy-duty industrial use. Applications include generator test stations, water purification plants, electrochemical machining equipment and other general industrial uses.

Male Vulcanized Plug—Crimped (Cable Size: 250–350MCM)

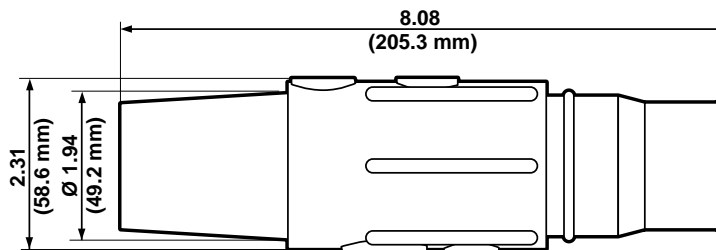
COLOR	COMPLETE CAT. NO.	CONTACT CAT. NO.	INSULATOR CAT. NO.
Black	17V21-E	17V21-C	17SVM-E
White	17V21-W	17V21-C	17SVM-W
Red	17V21-R	17V21-C	17SVM-R
Blue	17V21-B	17V21-C	17SVM-B
Green	17V21-G	17V21-C	17SVM-G
Yellow	17V21-Y	17V21-C	17SVM-Y
Orange	17V21-O	17V21-C	17SVM-O
Brown	17V21-H	17V21-C	17SVM-H

Female Vulcanized Plug—Crimped (Cable Size: 250–350MCM)

COLOR	COMPLETE CAT. NO.	CONTACT CAT. NO.	INSULATOR CAT. NO.
Black	17V24-E	17V24-C	17SVF-E
White	17V24-W	17V24-C	17SVF-W
Red	17V24-R	17V24-C	17SVF-R
Blue	17V24-B	17V24-C	17SVF-B
Green	17V24-G	17V24-C	17SVF-G
Yellow	17V24-Y	17V24-C	17SVF-Y
Orange	17V24-O	17V24-C	17SVF-O
Brown	17V24-H	17V24-C	17SVF-H



MALE VULCANIZED PLUG—CRIMPED
Cat. No. 17V21



FEMALE VULCANIZED PLUG—CRIMPED
Cat. No. 17V24

*Refer to Ampacity Chart for all cable sizes on page 2

17 Series — Taper Nose — Up to 690 AMP,* 600V

Male Detachable Plug—Double Set Screw (Cable Size: 350–500MCM)

COLOR	COMPLETE CAT. NO.	CONTACT CAT. NO.	INSULATOR CAT. NO.
Black	17D22-E	17D22-C	17SDM-E
White	17D22-W	17D22-C	17SDM-W
Red	17D22-R	17D22-C	17SDM-R
Blue	17D22-B	17D22-C	17SDM-B
Green	17D22-G	17D22-C	17SDM-G
Yellow	17D22-Y	17D22-C	17SDM-Y
Orange	17D22-O	17D22-C	17SDM-O
Brown	17D22-H	17D22-C	17SDM-H



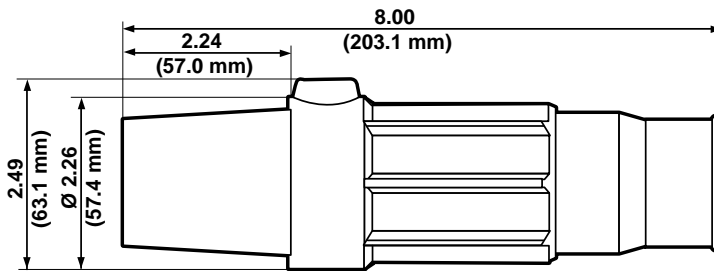
Female Detachable Plug—Double Set Screw (Cable Size: 350–500MCM)

COLOR	COMPLETE CAT. NO.	CONTACT CAT. NO.	INSULATOR CAT. NO.
Black	17D24-E	17D24-C	17SDF-E
White	17D24-W	17D24-C	17SDF-W
Red	17D24-R	17D24-C	17SDF-R
Blue	17D24-B	17D24-C	17SDF-B
Green	17D24-G	17D24-C	17SDF-G
Yellow	17D24-Y	17D24-C	17SDF-Y
Orange	17D24-O	17D24-C	17SDF-O
Brown	17D24-H	17D24-C	17SDF-H

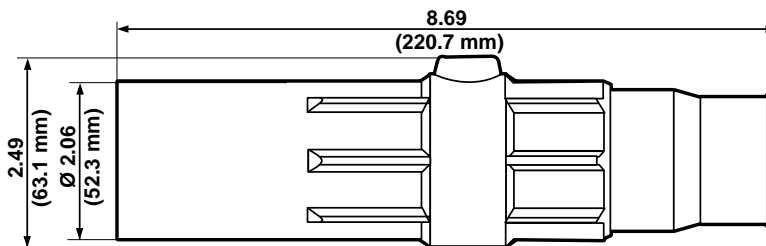


SPECIFICATIONS & FEATURES

- The 17 Series Taper Nose connectors withstand grueling, heavy-duty industrial use. Applications include generator test stations, water purification plants, electrochemical machining equipment and other general industrial uses.



MALE DETACHABLE PLUG—DOUBLE SET SCREW
Cat. No. 17D22



FEMALE DETACHABLE PLUG—DOUBLE SET SCREW
Cat. No. 17D24

*Refer to Ampacity Chart for all cable sizes on page 2

17 Series — Taper Nose — Up to 690 AMP,* 600V



Male Vulcanized Plug—Crimped (Cable Size: 350–500MCM)

COLOR	COMPLETE CAT. NO.	CONTACT CAT. NO.	INSULATOR CAT. NO.
Black	17V22-E	17V22-C	17SVM-E
White	17V22-W	17V22-C	17SVM-W
Red	17V22-R	17V22-C	17SVM-R
Blue	17V22-B	17V22-C	17SVM-B
Green	17V22-G	17V22-C	17SVM-G
Yellow	17V22-Y	17V22-C	17SVM-Y
Orange	17V22-O	17V22-C	17SVM-O
Brown	17V22-H	17V22-C	17SVM-H

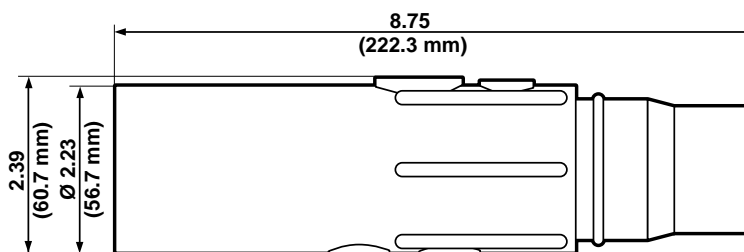


Female Vulcanized Plug—Crimped (Cable Size: 350–500MCM)

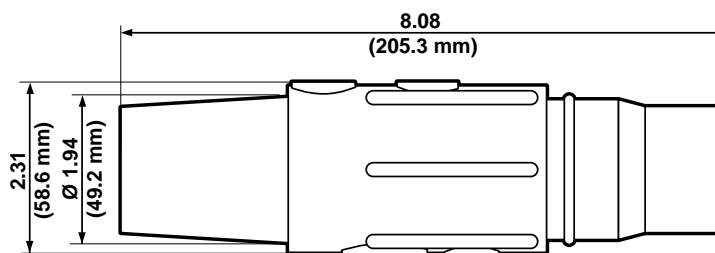
COLOR	COMPLETE CAT. NO.	CONTACT CAT. NO.	INSULATOR CAT. NO.
Black	17V25-E	17V25-C	17SVF-E
White	17V25-W	17V25-C	17SVF-W
Red	17V25-R	17V25-C	17SVF-R
Blue	17V25-B	17V25-C	17SVF-B
Green	17V25-G	17V25-C	17SVF-G
Yellow	17V25-Y	17V25-C	17SVF-Y
Orange	17V25-O	17V25-C	17SVF-O
Brown	17V25-H	17V25-C	17SVF-H

SPECIFICATIONS & FEATURES

- The 17 Series Taper Nose connectors withstand grueling, heavy-duty industrial use. Applications include generator test stations, water purification plants, electrochemical machining equipment and other general industrial uses.



MALE VULCANIZED PLUG—CRIMPED
Cat. No. 17V22



FEMALE VULCANIZED PLUG—CRIMPED
Cat. No. 17V25

*Refer to Ampacity Chart for all cable sizes on page 2

17 Series — Taper Nose — Up to 690 AMP,* 600V

Male Vulcanized Plug—Crimped (Cable Size: 500–750MCM)

COLOR	COMPLETE CAT. NO.	CONTACT CAT. NO.	INSULATOR CAT. NO.
Black	17V23-E	17V23-C	17SVM-E
White	17V23-W	17V23-C	17SVM-W
Red	17V23-R	17V23-C	17SVM-R
Blue	17V23-B	17V23-C	17SVM-B
Green	17V23-G	17V23-C	17SVM-G
Yellow	17V23-Y	17V23-C	17SVM-Y
Orange	17V23-O	17V23-C	17SVM-O
Brown	17V23-H	17V23-C	17SVM-H



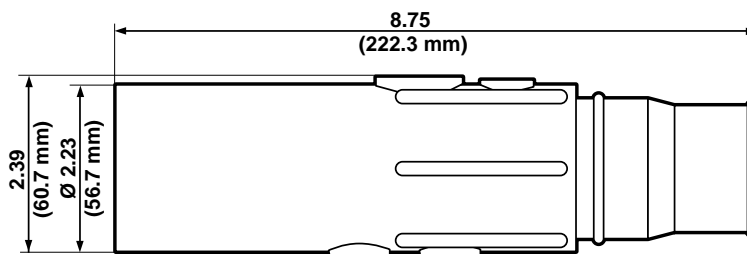
Female Vulcanized Plug—Crimped (Cable Size: 500–750MCM)

COLOR	COMPLETE CAT. NO.	CONTACT CAT. NO.	INSULATOR CAT. NO.
Black	17V26-E	17V26-C	17SVF-E
White	17V26-W	17V26-C	17SVF-W
Red	17V26-R	17V26-C	17SVF-R
Blue	17V26-B	17V26-C	17SVF-B
Green	17V26-G	17V26-C	17SVF-G
Yellow	17V26-Y	17V26-C	17SVF-Y
Orange	17V26-O	17V26-C	17SVF-O
Brown	17V26-H	17V26-C	17SVF-H

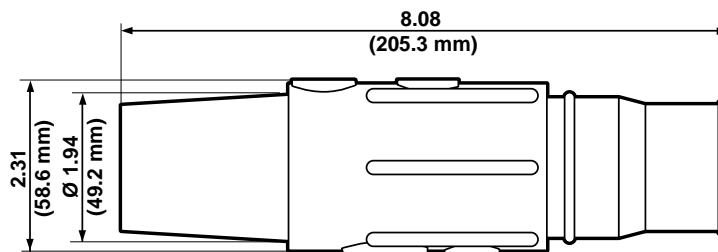


SPECIFICATIONS & FEATURES

- The 17 Series Taper Nose connectors withstand grueling, heavy-duty industrial use. Applications include generator test stations, water purification plants, electrochemical machining equipment and other general industrial uses.



MALE VULCANIZED PLUG—CRIMPED
Cat. No. 17V23



FEMALE VULCANIZED PLUG—CRIMPED
Cat. No. 17V26

*Refer to Ampacity Chart for all cable sizes on page 2

17 Series — Taper Nose — Up to 690 AMP,* 600V



17R21-W

Panel Receptacle—Threaded Stud (Cable Size: 250–750MCM)

	90° STYLE		30° STYLE	
	MALE	FEMALE	MALE	FEMALE
COLOR	CAT. NO.	CAT. NO.	CAT. NO.	CAT. NO.
Black	17R21-E	17R22-E	17R23-E	17R24-E
White	17R21-W	17R22-W	17R23-W	17R24-W
Red	17R21-R	17R22-R	17R23-R	17R24-R
Blue	17R21-B	17R22-B	17R23-B	17R24-B
Green	17R21-G	17R22-G	17R23-G	17R24-G
Yellow	17R21-Y	17R22-Y	17R23-Y	17R24-Y
Orange	17R21-O	17R22-O	17R23-O	17R24-O
Brown	17R21-H	17R22-H	17R23-H	17R24-H



17P21-E

Female Terminal Connector (Cable Size: 250–750MCM)

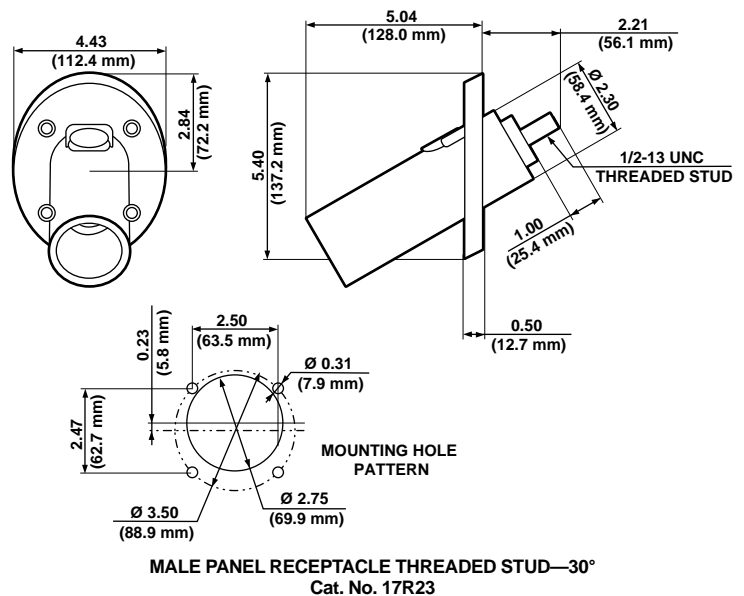
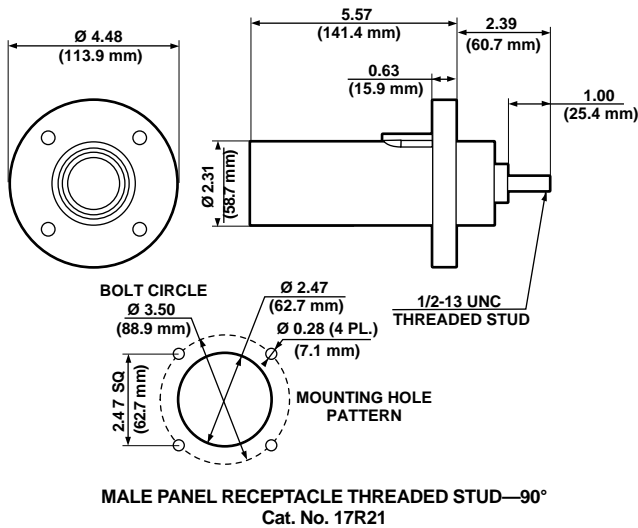
	ANGLE STYLE	OFFSET STYLE
COLOR	CAT. NO.	CAT. NO.
Black	17F21-E	17F22-E
White	17F21-W	17F22-W
Red	17F21-R	17F22-R
Blue	17F21-B	17F22-B
Green	17F21-G	17F22-G
Yellow	17F21-Y	17F22-Y
Orange	17F21-O	17F22-O
Brown	17F21-H	17F22-H

Protective Caps

	MALE	FEMALE
COLOR	CAT. NO.	CAT. NO.
Black	17P21-E	17P22-E
White	17P21-W	17P22-W
Red	17P21-R	17P22-R
Blue	17P21-B	17P22-B
Green	17P21-G	17P22-G
Yellow	17P21-Y	17P22-Y
Orange	17P21-O	17P22-O
Brown	17P21-H	17P22-H

SPECIFICATIONS & FEATURES

- The 17 Series Taper Nose connectors withstand grueling, heavy-duty industrial use. Applications include generator test stations, water purification plants, electrochemical machining equipment and other general industrial uses.



*Refer to Ampacity Chart for all cable sizes on page 2

19 Series — Ball Nose — Up to 690 AMP,* 600V

Male Detachable Plug—Double Set Screw (Cable Size: 250–350MCM)

COLOR	COMPLETE CAT. NO.	CONTACT CAT. NO.	INSULATOR CAT. NO.
Black	19D21-E	19D21-C	19SDM-E
White	19D21-W	19D21-C	19SDM-W
Red	19D21-R	19D21-C	19SDM-R
Blue	19D21-B	19D21-C	19SDM-B
Green	19D21-G	19D21-C	19SDM-G
Yellow	19D21-Y	19D21-C	19SDM-Y
Orange	19D21-O	19D21-C	19SDM-O
Brown	19D21-H	19D21-C	19SDM-H



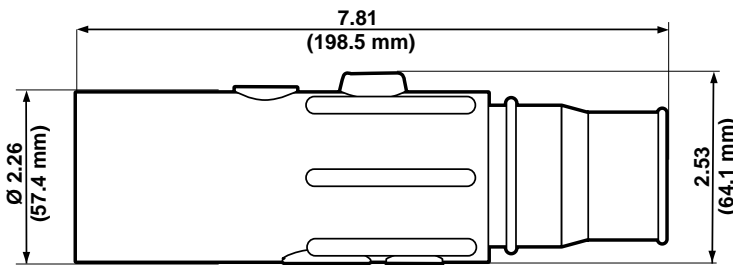
Female Detachable Plug—Double Set Screw (Cable Size: 250–350MCM)

COLOR	COMPLETE CAT. NO.	CONTACT CAT. NO.	INSULATOR CAT. NO.
Black	19D23-E	19D23-C	19SDF-E
White	19D23-W	19D23-C	19SDF-W
Red	19D23-R	19D23-C	19SDF-R
Blue	19D23-B	19D23-C	19SDF-B
Green	19D23-G	19D23-C	19SDF-G
Yellow	19D23-Y	19D23-C	19SDF-Y
Orange	19D23-O	19D23-C	19SDF-O
Brown	19D23-H	19D23-C	19SDF-H

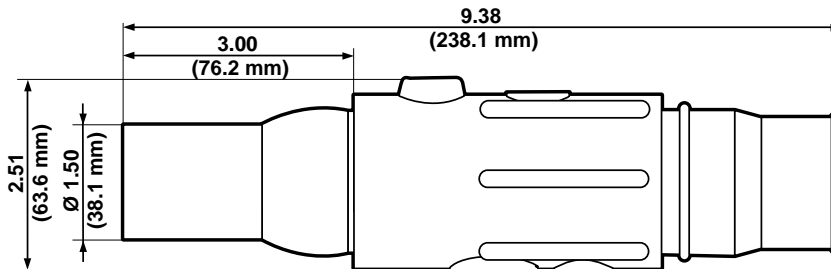


SPECIFICATIONS & FEATURES

- The 19 Series Ball Nose connectors are designed for general industrial applications



MALE DETACHABLE PLUG—DOUBLE SET SCREW
Cat. No. 19D21



FEMALE DETACHABLE PLUG—DOUBLE SET SCREW
Cat. No. 19D23

*Refer to Ampacity Chart for all cable sizes on page 2

19 Series — Ball Nose — Up to 690 AMP,* 600V



Male Detachable Plug—Double Set Screw (Cable Size: 350–500MCM)

COLOR	COMPLETE CAT. NO.	CONTACT CAT. NO.	INSULATOR CAT. NO.
Black	19D22-E	19D22-C	19SDM-E
White	19D22-W	19D22-C	19SDM-W
Red	19D22-R	19D22-C	19SDM-R
Blue	19D22-B	19D22-C	19SDM-B
Green	19D22-G	19D22-C	19SDM-G
Yellow	19D22-Y	19D22-C	19SDM-Y
Orange	19D22-O	19D22-C	19SDM-O
Brown	19D22-H	19D22-C	19SDM-H

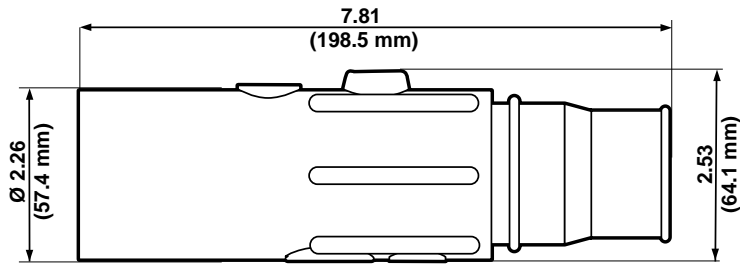


Female Detachable Plug—Double Set Screw (Cable Size: 350–500MCM)

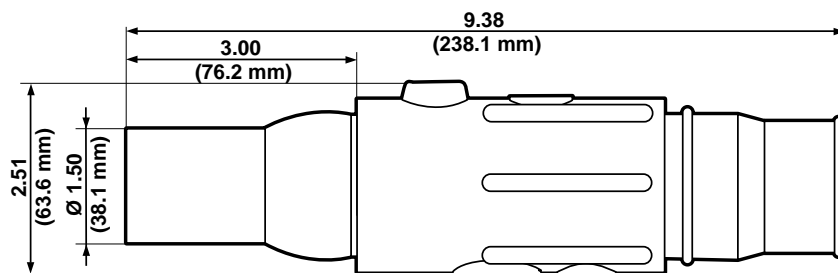
COLOR	COMPLETE CAT. NO.	CONTACT CAT. NO.	INSULATOR CAT. NO.
Black	19D24-E	19D24-C	19SDF-E
White	19D24-W	19D24-C	19SDF-W
Red	19D24-R	19D24-C	19SDF-R
Blue	19D24-B	19D24-C	19SDF-B
Green	19D24-G	19D24-C	19SDF-G
Yellow	19D24-Y	19D24-C	19SDF-Y
Orange	19D24-O	19D24-C	19SDF-O
Brown	19D24-H	19D24-C	19SDF-H

SPECIFICATIONS & FEATURES

- The 19 Series Ball Nose connectors are designed for general industrial applications



MALE DETACHABLE PLUG—DOUBLE SET SCREW
Cat. No. 19D22



FEMALE DETACHABLE PLUG—DOUBLE SET SCREW
Cat. No. 19D24

*Refer to Ampacity Chart for all cable sizes on page 2

19 Series — Ball Nose — Up to 690 AMP,* 600V

Male Vulcanized Plug—Crimped (Cable Size: 250–350MCM)

COLOR	COMPLETE CAT. NO.	CONTACT CAT. NO.	INSULATOR CAT. NO.
Black	19V21-E	19V21-C	19SVM-E
White	19V21-W	19V21-C	19SVM-W
Red	19V21-R	19V21-C	19SVM-R
Blue	19V21-B	19V21-C	19SVM-B
Green	19V21-G	19V21-C	19SVM-G
Yellow	19V21-Y	19V21-C	19SVM-Y
Orange	19V21-O	19V21-C	19SVM-O
Brown	19V21-H	19V21-C	19SVM-H



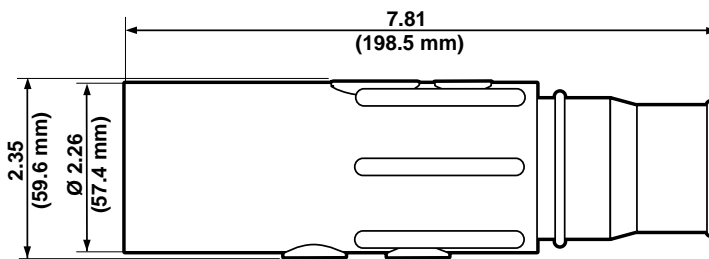
Female Vulcanized Plug—Crimped (Cable Size: 250–350MCM)

COLOR	COMPLETE CAT. NO.	CONTACT CAT. NO.	INSULATOR CAT. NO.
Black	19V24-E	19V24-C	19SVF-E
White	19V24-W	19V24-C	19SVF-W
Red	19V24-R	19V24-C	19SVF-R
Blue	19V24-B	19V24-C	19SVF-B
Green	19V24-G	19V24-C	19SVF-G
Yellow	19V24-Y	19V24-C	19SVF-Y
Orange	19V24-O	19V24-C	19SVF-O
Brown	19V24-H	19V24-C	19SVF-H

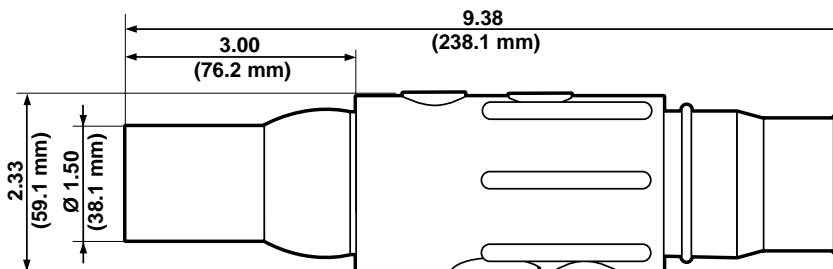


SPECIFICATIONS & FEATURES

- The 19 Series Ball Nose connectors are designed for general industrial applications



MALE VULCANIZED PLUG—CRIMPED
Cat. No. 19V21



FEMALE VULCANIZED PLUG—CRIMPED
Cat. No. 19V24

*Refer to Ampacity Chart for all cable sizes on page 2

19 Series — Ball Nose — Up to 690 AMP,* 600V



Male Vulcanized Plug—Crimped (Cable Size: 350–500MCM)

COLOR	COMPLETE CAT. NO.	CONTACT CAT. NO.	INSULATOR CAT. NO.
Black	19V22-E	19V22-C	19SVM-E
White	19V22-W	19V22-C	19SVM-W
Red	19V22-R	19V22-C	19SVM-R
Blue	19V22-B	19V22-C	19SVM-B
Green	19V22-G	19V22-C	19SVM-G
Yellow	19V22-Y	19V22-C	19SVM-Y
Orange	19V22-O	19V22-C	19SVM-O
Brown	19V22-H	19V22-C	19SVM-H

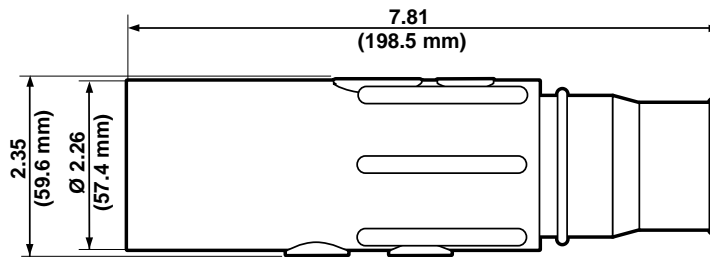


Female Vulcanized Plug—Crimped (Cable Size: 350–500MCM)

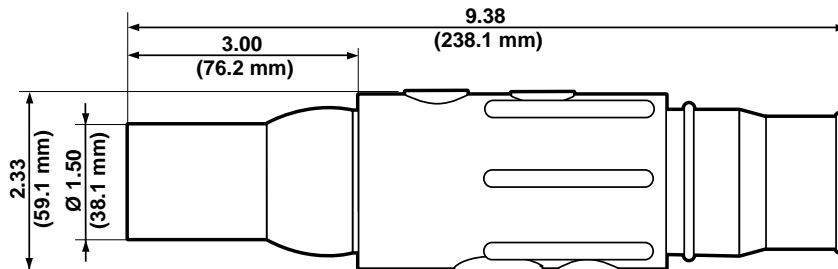
COLOR	COMPLETE CAT. NO.	CONTACT CAT. NO.	INSULATOR CAT. NO.
Black	19V25-E	19V25-C	19SVF-E
White	19V25-W	19V25-C	19SVF-W
Red	19V25-R	19V25-C	19SVF-R
Blue	19V25-B	19V25-C	19SVF-B
Green	19V25-G	19V25-C	19SVF-G
Yellow	19V25-Y	19V25-C	19SVF-Y
Orange	19V25-O	19V25-C	19SVF-O
Brown	19V25-H	19V25-C	19SVF-H

SPECIFICATIONS & FEATURES

- The 19 Series Ball Nose connectors are designed for general industrial applications



MALE VULCANIZED PLUG—CRIMPED
Cat. No. 19V22



FEMALE VULCANIZED PLUG—CRIMPED
Cat. No. 19V25

*Refer to Ampacity Chart for all cable sizes on page 2

19 Series — Ball Nose — Up to 690 AMP,* 600V

Male Vulcanized Plug—Crimped (Cable Size: 500–750MCM)

COLOR	COMPLETE CAT. NO.	CONTACT CAT. NO.	INSULATOR CAT. NO.
Black	19V23-E	19V23-C	19SVM-E
White	19V23-W	19V23-C	19SVM-W
Red	19V23-R	19V23-C	19SVM-R
Blue	19V23-B	19V23-C	19SVM-B
Green	19V23-G	19V23-C	19SVM-G
Yellow	19V23-Y	19V23-C	19SVM-Y
Orange	19V23-O	19V23-C	19SVM-O
Brown	19V23-H	19V23-C	19SVM-H



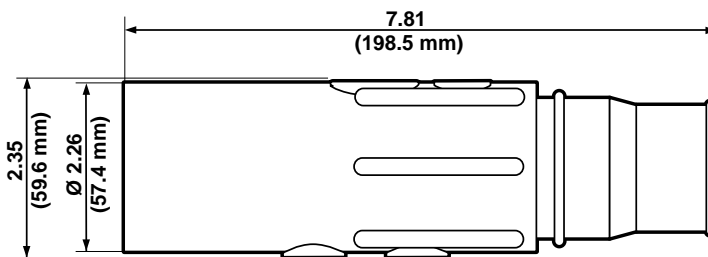
Female Vulcanized Plug—Crimped (Cable Size: 500–750MCM)

COLOR	COMPLETE CAT. NO.	CONTACT CAT. NO.	INSULATOR CAT. NO.
Black	19V26-E	19V26-C	19SVF-E
White	19V26-W	19V26-C	19SVF-W
Red	19V26-R	19V26-C	19SVF-R
Blue	19V26-B	19V26-C	19SVF-B
Green	19V26-G	19V26-C	19SVF-G
Yellow	19V26-Y	19V26-C	19SVF-Y
Orange	19V26-O	19V26-C	19SVF-O
Brown	19V26-H	19V26-C	19SVF-H

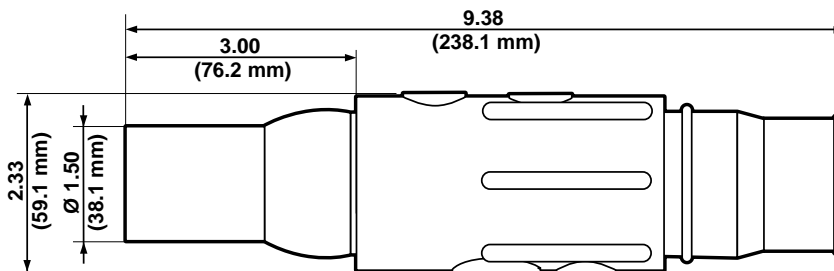


SPECIFICATIONS & FEATURES

- The 19 Series Ball Nose connectors are designed for general industrial applications



MALE VULCANIZED PLUG—CRIMPED
Cat. No. 19V23



FEMALE VULCANIZED PLUG—CRIMPED
Cat. No. 19V28

*Refer to Ampacity Chart for all cable sizes on page 2

19 Series — Ball Nose — Up to 690 AMP,* 600V



19R21-E

Panel Receptacle—Threaded Stud (Cable Size: 250–750MCM)

	90° STYLE		30° STYLE	
	MALE	FEMALE	MALE	FEMALE
COLOR	CAT. NO.	CAT. NO.	CAT. NO.	CAT. NO.
Black	19R21-E	19R22-E	19R23-E	19R24-E
White	19R21-W	19R22-W	19R23-W	19R24-W
Red	19R21-R	19R22-R	19R23-R	19R24-R
Blue	19R21-B	19R22-B	19R23-B	19R24-B
Green	19R21-G	19R22-G	19R23-G	19R24-G
Yellow	19R21-Y	19R22-Y	19R23-Y	19R24-Y
Orange	19R21-O	19R22-O	19R23-O	19R24-O
Brown	19R21-H	19R22-H	19R23-H	19R24-H



19P21-E

Female Terminal Connector (Cable Size: 250–750MCM)

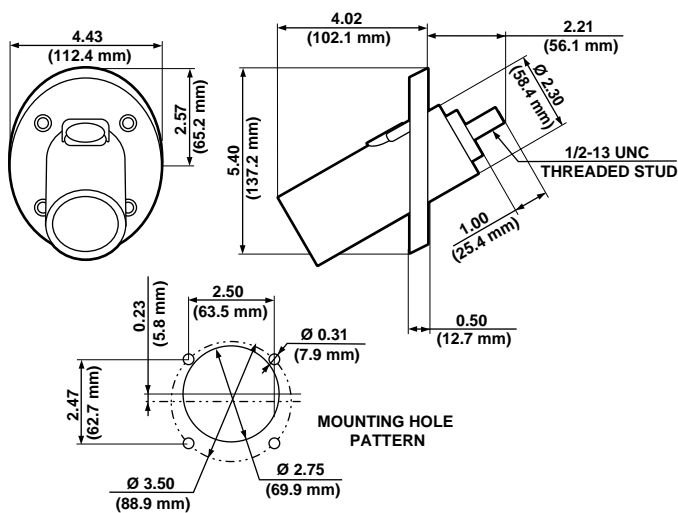
	ANGLE STYLE	OFFSET STYLE
COLOR	CAT. NO.	CAT. NO.
Black	19F21-E	19F22-E
White	19F21-W	19F22-W
Red	19F21-R	19F22-R
Blue	19F21-B	19F22-B
Green	19F21-G	19F22-G
Yellow	19F21-Y	19F22-Y
Orange	19F21-O	19F22-O
Brown	19F21-H	19F22-H

Protective Caps

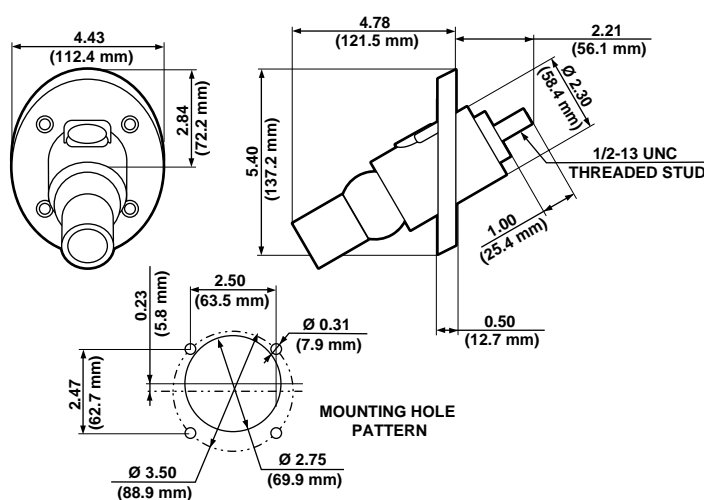
	MALE	FEMALE
COLOR	CAT. NO.	CAT. NO.
Black	19P21-E	19P22-E
White	19P21-W	19P22-W
Red	19P21-R	19P22-R
Blue	19P21-B	19P22-B
Green	19P21-G	19P22-G
Yellow	19P21-Y	19P22-Y
Orange	19P21-O	19P22-O
Brown	19P21-H	19P22-H

SPECIFICATIONS & FEATURES

- The 19 Series Ball Nose connectors are designed for general industrial applications



MALE PANEL RECEPTACLE THREADED STUD—30°
Cat. No. 19R23



FEMALE PANEL RECEPTACLE THREADED STUD—30°
Cat. No. 19R24

*Refer to Ampacity Chart for all cable sizes on page 2

22/23 Series — Latching Ball Nose/Latching Taper Nose — Up to 690 AMP,* 600V

Ball Nose—In-Line Latching Male Connectors—Crimped
(Cable Size: 250–350MCM)

COLOR	COMPLETE CAT. NO.	CONTACT CAT. NO.	INSULATOR CAT. NO.
Black	22L21-E	22L21-C	22SVM-E
White	22L21-W	22L21-C	22SVM-W
Red	22L21-R	22L21-C	22SVM-R

Ball Nose—In-Line Latching Female Connectors—Crimped
(Cable Size: 250–350MCM)

COLOR	COMPLETE CAT. NO.	CONTACT CAT. NO.	INSULATOR CAT. NO.
Black	22L24-E	22L24-C	22SVF-E
White	22L24-W	22L24-C	22SVF-W
Red	22L24-R	22L24-C	22SVF-R

Ball Nose—In-Line Latching Male Connectors—Crimped
(Cable Size: 350–500MCM)

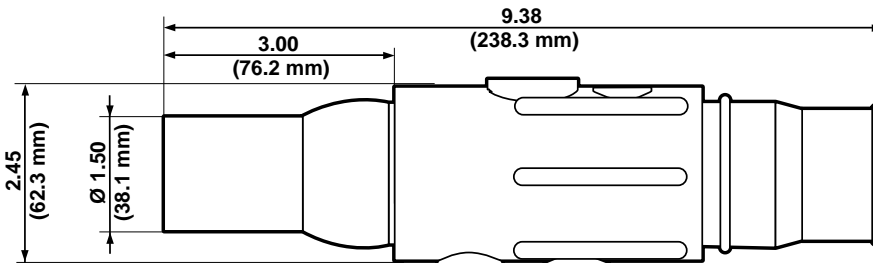
COLOR	COMPLETE CAT. NO.	CONTACT CAT. NO.	INSULATOR CAT. NO.
Black	22L22-E	22L22-C	22SVM-E
White	22L22-W	22L22-C	22SVM-W
Red	22L22-R	22L22-C	22SVM-R

Ball Nose—In-Line Latching Female Connectors—Crimped
(Cable Size: 350–500MCM)

COLOR	COMPLETE CAT. NO.	CONTACT CAT. NO.	INSULATOR CAT. NO.
Black	22L25-E	22L25-C	22SVF-E
White	22L25-W	22L25-C	22SVF-W
Red	22L25-R	22L25-C	22SVF-R



BALL NOSE IN-LINE LATCHING MALE CONNECTORS—CRIMPED
Cat. No. 22L21



BALL NOSE IN-LINE LATCHING FEMALE CONNECTORS—CRIMPED
Cat. No. 22L24

SPECIFICATIONS & FEATURES

- Leviton's Cam-Type positive latching connectors and receptacles are the standard used by Navy bases and shipyards in supplying 480 volts AC 3-phase power to ships at dockside. Our latching connector series has been thoroughly and successfully tested by ETL Laboratories to meet Navy specifications, including intermateability with competition. Our latching connector series provides heavy duty, completely insulated connectors that are vibration-resistant and positively lock into place. Leviton latching connectors will not vibrate, twist or turn loose, ensuring high conductivity and maximum efficiency. Leviton contacts can be retrofitted to existing locations and power distribution systems. Our male contacts are designed to provide 40% more surface contact with the female vs. competitive products. The additional efficiency will help ensure greater conductivity while preventing burnout.

TESTING & CODE COMPLIANCE

- ETL Tested, Report #521300
- Waterproof (when vulcanized) and fire-resistant for outside usage

*Refer to Ampacity Chart for all cable sizes on page 2

22/23 Series — Latching Ball Nose/Latching Taper Nose — Up to 690 AMP,* 600V



22L23-E



23L24-R

SPECIFICATIONS & FEATURES

- Leviton's Cam-Type positive latching connectors and receptacles are the standard used by Navy bases and shipyards in supplying 480 volts AC 3-phase power to ships at dockside. Our latching connector series has been thoroughly and successfully tested by ETL Laboratories to meet Navy specifications, including interchangeability with competition. Our latching connector series provides heavy duty, completely insulated connectors that are vibration-resistant and positively lock into place. Leviton latching connectors will not vibrate, twist or turn loose, ensuring high conductivity and maximum efficiency. Leviton contacts can be retrofitted to existing locations and power distribution systems. Our male contacts are designed to provide 40% more surface contact with the female vs. competitive products. The additional efficiency will help ensure greater conductivity while preventing burnout.

Ball Nose—In-Line Latching Male Connectors—Crimped (Cable Size: 500–750MCM)

COLOR	COMPLETE CAT. NO.	CONTACT CAT. NO.	INSULATOR CAT. NO.
Black	22L23-E	22L23-C	22SVM-E
White	22L23-W	22L23-C	22SVM-W
Red	22L23-R	22L23-C	22SVM-R

Ball Nose—In-Line Latching Female Connectors—Crimped (Cable Size: 500–750MCM)

COLOR	COMPLETE CAT. NO.	CONTACT CAT. NO.	INSULATOR CAT. NO.
Black	22L26-E	22L26-C	22SVF-E
White	22L26-W	22L26-C	22SVF-W
Red	22L26-R	22L26-C	22SVF-R

Taper Nose—In-Line Latching Male Connectors—Crimped (Cable Size: 250–350MCM)

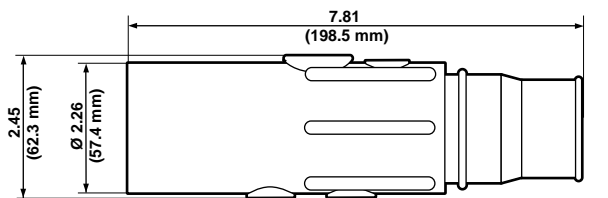
COLOR	COMPLETE CAT. NO.	CONTACT CAT. NO.	INSULATOR CAT. NO.
Black	23L21-E	23L21-C	23SVM-E
White	23L21-W	23L21-C	23SVM-W
Red	23L21-R	23L21-C	23SVM-R

Taper Nose—In-Line Latching Female Connectors—Crimped (Cable Size: 250–350MCM)

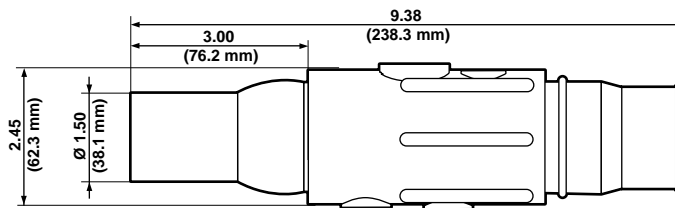
COLOR	COMPLETE CAT. NO.	CONTACT CAT. NO.	INSULATOR CAT. NO.
Black	23L24-E	23L24-C	23SVF-E
White	23L24-W	23L24-C	23SVF-W
Red	23L24-R	23L24-C	23SVF-R

TESTING & CODE COMPLIANCE

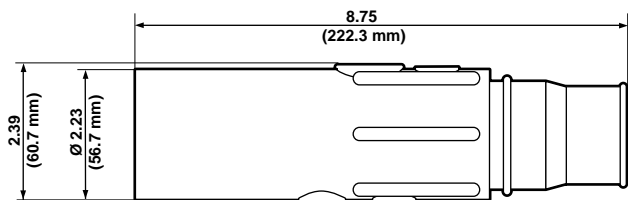
- ETL Tested, Report #521300
- Waterproof (when vulcanized) and fire-resistant for outside usage



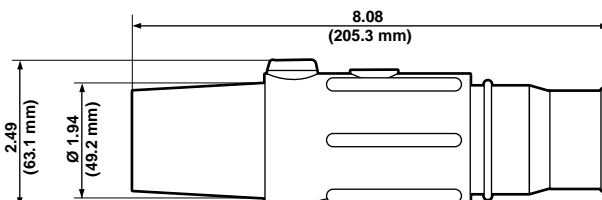
BALL NOSE IN-LINE LATCHING MALE CONNECTORS—CRIMPED
Cat. No. 22L23



BALL NOSE IN-LINE LATCHING FEMALE CONNECTORS—CRIMPED
Cat. No. 22L26



TAPER NOSE IN-LINE LATCHING MALE CONNECTORS—CRIMPED
Cat. No. 23L21



TAPER NOSE IN-LINE LATCHING FEMALE CONNECTORS—CRIMPED
Cat. No. 23L24

*Refer to Ampacity Chart for all cable sizes on page 2

22/23 Series — Latching Taper Nose — Up to 690 AMP,* 600V

Taper Nose—In-Line Latching Male Connectors—Crimped
(Cable Size: 350–500MCM)

COLOR	COMPLETE CAT. NO.	CONTACT CAT. NO.	INSULATOR CAT. NO.
Black	23L22-E	23L22-C	23SVM-E
White	23L22-W	23L22-C	23SVM-W
Red	23L22-R	23L22-C	23SVM-R

Taper Nose—In-Line Latching Female Connectors—Crimped
(Cable Size: 350–500MCM)

COLOR	COMPLETE CAT. NO.	CONTACT CAT. NO.	INSULATOR CAT. NO.
Black	23L25-E	23L25-C	23SVF-E
White	23L25-W	23L25-C	23SVF-W
Red	23L25-R	23L25-C	23SVF-R
Blue	23L25-B	23L25-C	23SVF-B
Green	23L25-G	23L25-C	23SVF-G



Taper Nose—In-Line Latching Male Connectors—Crimped
(Cable Size: 500–750MCM)

COLOR	COMPLETE CAT. NO.	CONTACT CAT. NO.	INSULATOR CAT. NO.
Black	23L23-E	23L23-C	23SVM-E
White	23L23-W	23L23-C	23SVM-W
Red	23L23-R	23L23-C	23SVM-R
Blue	23L23-B	23L23-C	23SVM-B
Green	23L23-G	23L23-C	23SVM-G

Taper Nose—In-Line Latching Female Connectors—Crimped
(Cable Size: 500–750MCM)

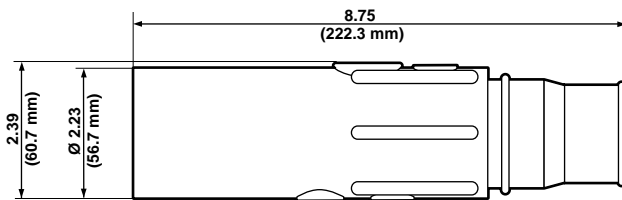
COLOR	COMPLETE CAT. NO.	CONTACT CAT. NO.	INSULATOR CAT. NO.
Black	23L26-E	23L26-C	23SVF-E
White	23L26-W	23L26-C	23SVF-W
Red	23L26-R	23L26-C	23SVF-R

SPECIFICATIONS & FEATURES

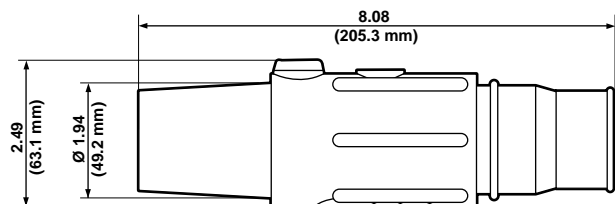
- Leviton's Cam-Type positive latching connectors and receptacles are the standard used by Navy bases and shipyards in supplying 480 volts AC 3-phase power to ships at dockside. Our latching connector series has been thoroughly and successfully tested by ETL Laboratories to meet Navy specifications, including intermateability with competition. Our latching connector series provides heavy duty, completely insulated connectors that are vibration-resistant and positively lock into place. Leviton latching connectors will not vibrate, twist or turn loose, ensuring high conductivity and maximum efficiency. Leviton contacts can be retrofitted to existing locations and power distribution systems. Our male contacts are designed to provide 40% more surface contact with the female vs. competitive products. The additional efficiency will help ensure greater conductivity while preventing burnout.

TESTING & CODE COMPLIANCE

- ETL Tested, Report #521300
- Waterproof (when vulcanized) and fire-resistant for outside usage



TAPER NOSE IN-LINE LATCHING MALE CONNECTORS—CRIMPED
Cat. No. 23L23



TAPER NOSE IN-LINE LATCHING FEMALE CONNECTORS—CRIMPED
Cat. No. 23L26

*Refer to Ampacity Chart for all cable sizes on page 2

22/23 Series — Latching Ball Nose/Latching Taper Nose — Up to 690 AMP,* 600V



Ball Nose—Panel Receptacle—Threaded Stud (Cable Size: 250–750MCM)

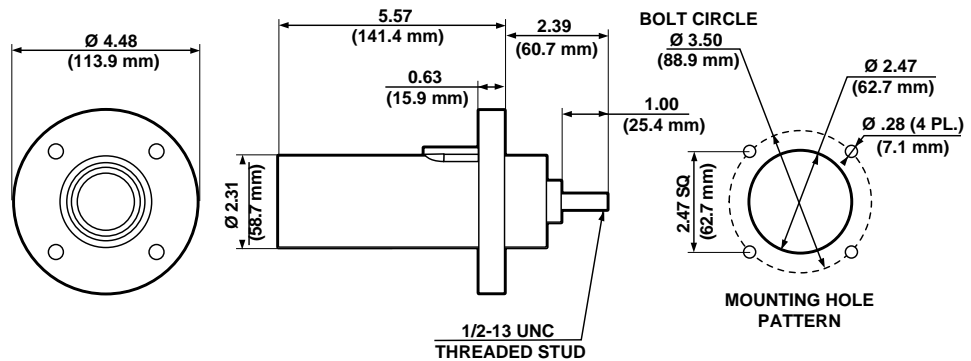
	90° STYLE		30° STYLE	
	MALE	FEMALE	MALE	FEMALE
COLOR	CAT. NO.	CAT. NO.	CAT. NO.	CAT. NO.
Black	22R21-E	22R22-E	22R23-E	22R24-E
White	22R21-W	22R22-W	22R23-W	22R24-W
Red	22R21-R	22R22-R	22R23-R	22R24-R

Taper Nose—Panel Receptacle—Threaded Stud (Cable Size: 250–750MCM)

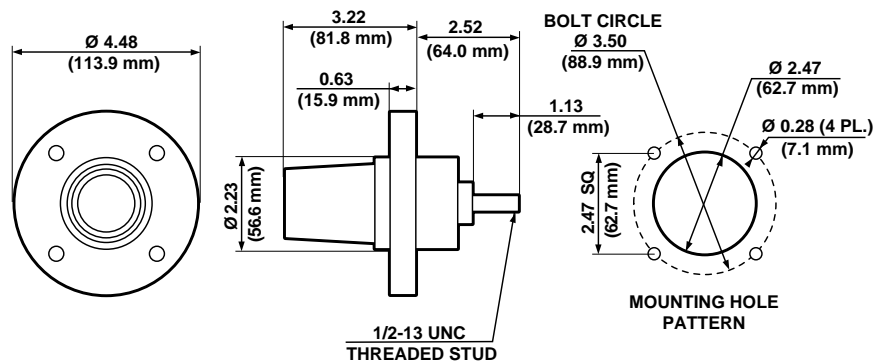
	90° STYLE		30° STYLE	
	MALE	FEMALE	MALE	FEMALE
COLOR	CAT. NO.	CAT. NO.	CAT. NO.	CAT. NO.
Black	23R21-E	23R22-E	23R23-E	23R24-E
White	23R21-W	23R22-W	23R23-W	23R24-W
Red	23R21-R	23R22-R	23R23-R	23R24-R
Blue	23R21-B	—	23R23-B	—
Green	23R21-G	—	23R23-G	—

SPECIFICATIONS & FEATURES

- Leviton's Cam-Type positive latching connectors and receptacles are the standard used by Navy bases and shipyards in supplying 480 volts AC 3-phase power to ships at dockside. Our latching connector series has been thoroughly and successfully tested by ETL Laboratories to meet Navy specifications, including intermateability with competition. Our latching connector series provides heavy duty, completely insulated connectors that are vibration-resistant and positively lock into place. Leviton latching connectors will not vibrate, twist or turn loose, ensuring high conductivity and maximum efficiency. Leviton contacts can be retrofitted to existing locations and power distribution systems. Our male contacts are designed to provide 40% more surface contact with the female vs. competitive products. The additional efficiency will help ensure greater conductivity while preventing burnout.



90° MALE PANEL RECEPTACLE THREADED STUD—Cat. No. 23R21



90° FEMALE PANEL RECEPTACLE THREADED STUD—Cat. No. 23R22

*Refer to Ampacity Chart for all cable sizes on page 2

**22/23 Series — Latching Ball Nose/Latching Taper Nose —
Up to 690 AMP,* 600V**

Protective Caps

	BALL NOSE		TAPER NOSE	
	MALE	FEMALE	MALE	FEMALE
COLOR	CAT. NO.	CAT. NO.	CAT. NO.	CAT. NO.
Black	22P21-E	22P22-E	23P21-E	23P22-E
White	22P21-W	22P22-W	23P21-W	23P22-W
Red	22P21-R	22P22-R	23P21-R	23P22-R



*Ball Nose—Thermoplastic
Housing Panel Receptacle—
Threaded Stud
(Cable Size: 250–350MCM)*

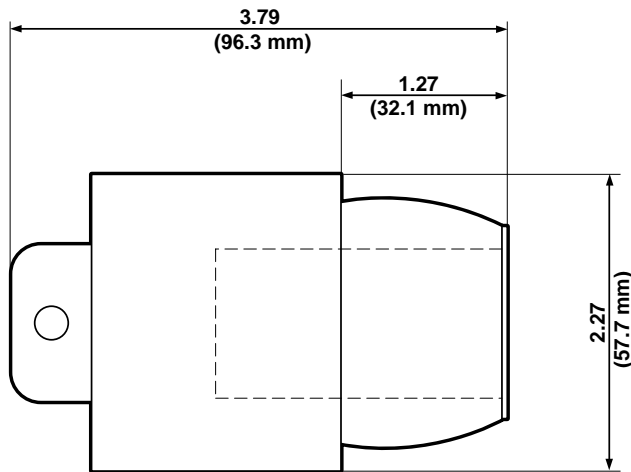
	MALE	FEMALE
COLOR	CAT. NO.	CAT. NO.
Black	22H21-E	22H22-E
White	22H21-W	22H22-W
Red	22H21-R	22H22-R

*Taper Nose—Thermoplastic
Housing Panel Receptacle—
Threaded Stud
(Cable Size: 350–500MCM)*

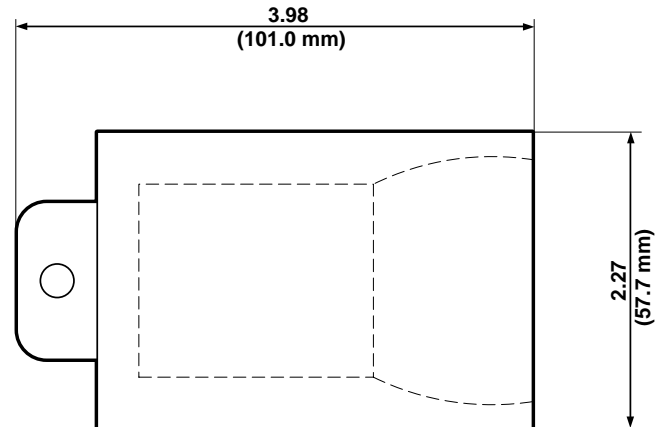
	MALE	FEMALE
COLOR	CAT. NO.	CAT. NO.
Black	23H21-E	23H22-E
White	23H21-W	23H22-W
Red	23H21-R	23H22-R

SPECIFICATIONS & FEATURES

- Leviton's Cam-Type positive latching connectors and receptacles are the standard used by Navy bases and shipyards in supplying 480 volts AC 3-phase power to ships at docksides. Our latching connector series has been thoroughly and successfully tested by ETL Laboratories to meet Navy specifications, including intermateability with competition. Our latching connector series provides heavy duty, completely insulated connectors that are vibration-resistant and positively lock into place. Leviton latching connectors will not vibrate, twist or turn loose, ensuring high conductivity and maximum efficiency. Leviton contacts can be retrofitted to existing locations and power distribution systems. Our male contacts are designed to provide 40% more surface contact with the female vs. competitive products. The additional efficiency will help ensure greater conductivity while preventing burnout.



MALE PROTECTIVE CAP
Cat. No. 22P21



FEMALE PROTECTIVE CAP
Cat. No. 22P22

*Refer to Ampacity Chart for all cable sizes on page 2

"COM-A-LONG" Assembly Tool

15 Series

DESCRIPTION	CAT. NO.
For Female Plug	15CLM



For Male Plug	15CLF
---------------	-------



16 Series & 18 Series

DESCRIPTION	CAT. NO.
For Female Plug	16CLM



For Male Plug	16CLF
---------------	-------



17 Series & 18 Series

DESCRIPTION	CAT. NO.
For Female Plug	17CLM



For Male Plug	17CLF
---------------	-------



Set Screws (10 per package)

DESCRIPTION	CAT. NO.
15 Series	A0001



16 Series & 18 Series	A0002
-----------------------	-------



Copper Shims (10 per package)

DESCRIPTION	CAT. NO.
15 Series	A0006



16 Series & 18 Series	A0004
-----------------------	-------



Strain Relief Wire (10 per package)

DESCRIPTION	CAT. NO.
15 Series	A0007



16 Series & 18 Series	A0003
-----------------------	-------



Insulated Screw (10 per package)

DESCRIPTION	CAT. NO.
16 Series & 18 Series	A0005



Lubricating Spray

DESCRIPTION	CAT. NO.
16 Fluid Ounce Can	C0001



Catalog Number Index

IMPORTANT: Dash-numbers, indicating different product colors or other variations, are listed on the same page as the basic catalog numbers shown below, unless otherwise indicated.

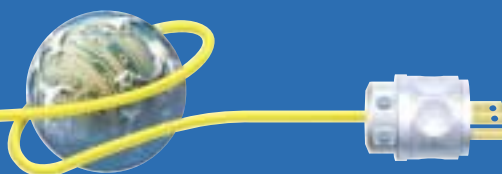
Cat. No.	Page No.	Cat. No.	Page No.	Cat. No.	Page No.	Cat. No.	Page No.	Cat. No.	Page No.	Cat. No.	Page No.
18A25-R	35	18D26-R	26	18D34-O	25	18P22-Y	33	18SDF-HDW	28	18SVF-34R	32
18A25-W	35	18D26-W	26	18D34-R	25	18R21-B	34	18SDF-HDY	28	18SVF-34W	32
18A25-Y	35	18D26-Y	26	18D34-W	25	18R21-E	34	18SDM-14B	22, 24, 27	18SVF-34Y	32
18A26-B	35	18D27-B	28	18D34-Y	25	18R21-G	34	18SDM-14E	22, 24, 27	18SVF-HDB	31
18A26-E	35	18D27-C	28	18D35-B	26	18R21-H	34	18SDM-14G	22, 24, 27	18SVF-HDE	31
18A26-G	35	18D27-E	28	18D35-C	26	18R21-O	34	18SDM-14H	22, 24, 27	18SVF-HDG	31
18A26-H	35	18D27-G	28	18D35-E	26	18R21-R	34	18SDM-14O	22, 24, 27	18SVF-HDH	31
18A26-O	35	18D27-H	28	18D35-G	26	18R21-W	34	18SDM-14R	22, 24, 27	18SVF-HDO	31
18A26-R	35	18D27-O	28	18D35-H	26	18R21-Y	34	18SDM-14W	22, 24, 27	18SVF-HDR	31
18A26-W	35	18D27-R	28	18D35-O	26	18R22-B	34	18SDM-14Y	22, 24, 27	18SVF-HDW	31
18A26-Y	35	18D27-W	28	18D35-R	26	18R22-E	34	18SDM-22B	21, 23, 25, 26	18SVF-HDY	31
18D21-B	21	18D27-Y	28	18D35-W	26	18R22-G	34	18SDM-22E	21, 23, 25, 26	18SVM-12B	30
18D21-C	21	18D28-B	27	18D35-Y	26	18R22-H	34	18SDM-22G	21, 23, 25, 26	18SVM-12E	30
18D21-E	21	18D28-C	27	18D36-B	28	18R22-O	34	18SDM-22H	21, 23, 25, 26	18SVM-12G	30
18D21-G	21	18D28-E	27	18D36-C	28	18R22-R	34	18SDM-22O	21, 23, 25, 26	18SVM-12H	30
18D21-H	21	18D28-G	27	18D36-E	28	18R22-W	34	18SDM-22R	21, 23, 25, 26	18SVM-12O	30
18D21-O	21	18D28-H	27	18D36-G	28	18R22-Y	34	18SDM-22W	21, 23, 25, 26	18SVM-12R	30
18D21-R	21	18D28-O	27	18D36-H	28	18R23-B	34	18SDM-22Y	21, 23, 25, 26	18SVM-12W	30
18D21-W	21	18D28-R	27	18D36-O	28	18R23-E	34	18SVM-12Y	30	18SVM-21B	29
18D21-Y	21	18D28-W	27	18D36-R	28	18R23-G	34	18SVM-21E	29	18SVM-21G	29
18D22-B	23	18D28-Y	27	18D36-W	28	18R23-H	34	18SVM-21H	29	18SVM-21O	29
18D22-C	23	18D29-B	21	18D36-Y	28	18R23-O	34	18SVM-21R	29	18SVM-21W	29
18D22-E	23	18D29-C	21	18D37-B	27	18R23-R	34	18SVM-21Y	29	18SVM-21X	29
18D22-G	23	18D29-E	21	18D37-C	27	18R23-W	34	18SVM-21Z	29	18SVM-21Y	29
18D22-H	23	18D29-G	21	18D37-E	27	18R23-Y	34	18SVM-21A	29	18SVM-21Z	29
18D22-O	23	18D29-H	21	18D37-G	27	18R24-B	34	18SVM-21B	29	18SVM-21A	29
18D22-R	23	18D29-O	21	18D37-H	27	18R24-E	34	18SVM-21C	29	18SVM-21B	29
18D22-W	23	18D29-R	21	18D37-O	27	18R24-G	34	18SVM-21D	29	18SVM-21C	29
18D22-Y	23	18D29-W	21	18D37-R	27	18R24-H	34	18SVM-21E	29	18SVM-21D	29
18D23-B	22	18D29-Y	21	18D37-W	27	18R24-O	34	18SVM-21F	29	18SVM-21E	29
18D23-C	22	18D31-B	23	18D37-Y	27	18R24-R	34	18SVM-21G	29	18SVM-21F	29
18D23-E	22	18D31-C	23	18F21-B	33	18R24-W	34	18SVM-21H	29	18SVM-21G	29
18D23-G	22	18D31-E	23	18F21-E	33	18R24-Y	34	18SVM-21I	29	18SVM-21H	29
18D23-H	22	18D31-G	23	18F21-G	33	18SDF-14B	22, 24	18SVM-21J	29	18SVM-21I	29
18D23-O	22	18D31-H	23	18F21-H	33	18SDF-14E	22, 24	18SVM-21K	29	18SVM-21J	29
18D23-R	22	18D31-O	23	18F21-O	33	18SDF-14G	22, 24	18SVM-21L	29	18SVM-21K	29
18D23-W	22	18D31-R	23	18F21-R	33	18SDF-14H	22, 24	18SVM-21M	29	18SVM-21L	29
18D23-Y	22	18D31-W	23	18F21-W	33	18SDF-14O	22, 24	18SVM-21N	29	18SVM-21M	29
18D24-B	24	18D31-Y	23	18F21-Y	33	18SDF-14R	22, 24	18SVM-21O	29	18SVM-21N	29
18D24-C	24	18D32-B	22	18F22-B	33	18SDF-14W	22, 24	18SVM-21P	29	18SVM-21O	29
18D24-E	24	18D32-C	22	18F22-E	33	18SDF-14Y	22, 24	18SVM-21Q	29	18SVM-21P	29
18D24-G	24	18D32-E	22	18F22-G	33	18SDF-22B	21, 23, 25, 26	18SVM-21R	29	18SVM-21Q	29
18D24-H	24	18D32-G	22	18F22-H	33	18SDF-22E	21, 23, 25, 26	18SVM-21S	29	18SVM-21R	29
18D24-O	24	18D32-H	22	18F22-O	33	18SDF-22G	21, 23, 25, 26	18SVM-21T	29	18SVM-21S	29
18D24-R	24	18D32-O	22	18F22-R	33	18SDF-22H	21, 23, 25, 26	18SVM-21U	29	18SVM-21T	29
18D24-W	24	18D32-R	22	18F22-Y	33	18SDF-22O	21, 23, 25, 26	18SVM-21V	29	18SVM-21U	29
18D24-Y	24	18D32-W	22	18F22-O	33	18SDF-22R	21, 23, 25, 26	18SVM-21W	29	18SVM-21V	29
18D25-B	25	18D32-Y	22	18P21-B	33	18SDF-22W	21, 23, 25, 26	18SVM-21X	29	18SVM-21W	29
18D25-C	25	18D33-B	24	18P21-E	33	18SDF-22Y	21, 23, 25, 26	18SVM-21Y	29	18SVM-21X	29
18D25-E	25	18D33-C	24	18P21-G	33	18SDF-HDB	28	18SVM-21Z	29	18SVM-21Y	29
18D25-G	25	18D33-E	24	18P21-H	33	18SDF-HDE	28	18SVM-21A	29	18SVM-21Z	29
18D25-H	25	18D33-G	24	18P21-O	33	18SDF-HDG	28	18SVM-21B	29	18SVM-21A	29
18D25-O	25	18D33-H	24	18P21-R	33	18SDF-HDH	28	18SVM-21C	29	18SVM-21B	29
18D25-R	25	18D33-O	24	18P21-W	33	18SDF-HDO	28	18SVM-21D	29	18SVM-21C	29
18D25-W	25	18D33-R	24	18P21-Y	33	18SDF-HDR	28	18SVM-21E	29	18SVM-21D	29
18D25-Y	25	18D33-W	24	18P22-B	33	18SDF-HDB	28	18SVM-21F	29	18SVM-21E	29
18D26-B	26	18D33-Y	24	18P22-E	33	18SDF-HDE	28	18SVM-21G	29	18SVM-21F	29
18D26-C	26	18D34-B	25	18P22-G	33	18SDF-HDG	28	18SVM-21H	29	18SVM-21G	29
18D26-E	26	18D34-C	25	18P22-H	33	18SDF-HDH	28	18SVM-21I	29	18SVM-21H	29
18D26-G	26	18D34-E	25	18P22-O	33	18SDF-HDO	28	18SVM-21J	29	18SVM-21I	29
18D26-H	26	18D34-G	25	18P22-R	33	18SDF-HDR	28	18SVM-21K	29	18SVM-21J	29
18D26-O	26	18D34-H	25	18P22-W	33			18SVM-21L	29	18SVM-21K	29

Catalog Number Index

IMPORTANT: Dash-numbers, indicating different product colors or other variations, are listed on the same page as the basic catalog numbers shown below, unless otherwise indicated.

Cat. No.	Page No.	Cat. No.	Page No.	Cat. No.	Page No.	Cat. No.	Page No.	Cat. No.	Page No.	Cat. No.	Page No.	
18V23-C	31	19D21-W	42	19R21-E	47	19SVM-Y	44, 45, 46	22H22-R	52	23L22-R	50	
18V23-E	31	19D21-Y	42	19R21-G	47	19V21-B	44	22H22-W	52	23L22-W	50	
18V23-G	31	19D22-B	43	19R21-H	47	19V21-C	44	22L21-C	48	23L23-B	50	
18V23-H	31	19D22-C	43	19R21-O	47	19V21-E	44	22L21-E	48	23L23-C	50	
18V23-O	31	19D22-E	43	19R21-R	47	19V21-G	44	22L21-R	48	23L23-E	50	
18V23-R	31	19D22-G	43	19R21-W	47	19V21-H	44	22L21-W	48	23L23-G	50	
18V23-W	31	19D22-H	43	19R21-Y	47	19V21-O	44	22L22-C	48	23L23-R	50	
18V23-Y	31	19D22-O	43	19R22-B	47	19V21-R	44	22L22-E	48	23L23-W	50	
18V24-B	32	19D22-R	43	19R22-E	47	19V21-W	44	22L22-R	48	23L24-C	49	
18V24-C	32	19D22-W	43	19R22-G	47	19V21-Y	44	22L22-W	48	23L24-E	49	
18V24-E	32	19D22-Y	43	19R22-H	47	19V22-B	45	22L23-C	49	23L24-R	49	
18V24-G	32	19D23-B	42	19R22-O	47	19V22-C	45	22L23-E	49	23L24-W	49	
18V24-H	32	19D23-C	42	19R22-R	47	19V22-E	45	22L23-R	49	23L25-B	50	
18V24-O	32	19D23-E	42	19R22-W	47	19V22-G	45	22L23-W	49	23L25-C	50	
18V24-R	32	19D23-G	42	19R22-Y	47	19V22-H	45	22L24-C	48	23L25-E	50	
18V24-W	32	19D23-H	42	19R23-B	47	19V22-O	45	22L24-E	48	23L25-G	50	
18V24-Y	32	19D23-O	42	19R23-E	47	19V22-R	45	22L24-R	48	23L25-R	50	
18V25-B	29	19D23-R	42	19R23-G	47	19V22-W	45	22L24-W	48	23L25-W	50	
18V25-C	29	19D23-W	42	19R23-H	47	19V22-Y	45	22L25-C	48	23L26-C	50	
18V25-E	29	19D23-Y	42	19R23-O	47	19V23-B	46	22L25-E	48	23L26-E	50	
18V25-G	29	19D24-B	43	19R23-R	47	19V23-C	46	22L25-R	48	23L26-R	50	
18V25-H	29	19D24-C	43	19R23-W	47	19V23-E	46	22L25-W	48	23L26-W	50	
18V25-O	29	19D24-E	43	19R23-Y	47	19V23-G	46	22L26-C	49	23P21-E	52	
18V25-R	29	19D24-G	43	19R24-B	47	19V23-H	46	22L26-E	49	23P21-R	52	
18V25-W	29	19D24-H	43	19R24-E	47	19V23-O	46	22L26-R	49	23P21-W	52	
18V25-Y	29	19D24-O	43	19R24-G	47	19V23-R	46	22L26-W	49	23P22-E	52	
18V26-B	30	19D24-R	43	19R24-H	47	19V23-W	46	22P21-E	52	23P22-R	52	
18V26-C	30	19D24-W	43	19R24-O	47	19V23-Y	46	22P21-R	52	23P22-W	52	
18V26-E	30	19D24-Y	43	19R24-R	47	19V24-B	44	22P21-W	52	23R21-B	51	
18V26-G	30	19F21-B	47	19R24-W	47	19V24-C	44	22P22-E	52	23R21-E	51	
18V26-H	30	19F21-E	47	19R24-Y	47	19V24-E	44	22P22-R	52	23R21-G	51	
18V26-O	30	19F21-G	47	19SDF-B	42, 43	19V24-G	44	22P22-W	52	23R21-R	51	
18V26-R	30	19F21-H	47	19SDF-E	42, 43	19V24-H	44	22R21-E	51	23R21-W	51	
18V26-W	30	19F21-O	47	19SDF-G	42, 43	19V24-O	44	22R21-R	51	23R22-E	51	
18V26-Y	30	19F21-R	47	19SDF-H	42, 43	19V24-R	44	22R21-W	51	23R22-R	51	
18V27-B	31	19F21-W	47	19SDF-O	42, 43	19V24-W	44	22R22-E	51	23R22-W	51	
18V27-C	31	19F21-Y	47	19SDF-R	42, 43	19V24-Y	44	22R22-R	51	23R23-B	51	
18V27-E	31	19F22-B	47	19SDF-W	42, 43	19V25-B	45	22R22-W	51	23R23-E	51	
18V27-G	31	19F22-E	47	19SDF-Y	42, 43	19V25-C	45	22R23-E	51	23R23-G	51	
18V27-H	31	19F22-G	47	19SDM-B	42, 43	19V25-E	45	22R23-R	51	23R23-R	51	
18V27-O	31	19F22-H	47	19SDM-E	42, 43	19V25-G	45	22R23-W	51	23R23-W	51	
18V27-R	31	19F22-O	47	19SDM-G	42, 43	19V25-H	45	22R24-E	51	23R24-E	51	
18V27-W	31	19F22-R	47	19SDM-H	42, 43	19V25-O	45	22R24-R	51	23R24-R	51	
18V27-Y	31	19F22-W	47	19SDM-O	42, 43	19V25-R	45	22R24-W	51	23R24-W	51	
18V28-B	32	19F22-Y	47	19SDM-R	42, 43	19V25-W	45	22SVF-E	48, 49	23SVF-B	50	
18V28-C	32	19P21-B	47	19SDM-W	42, 43	19V25-Y	45	22SVF-R	48, 49	23SVF-E	49, 50	
18V28-E	32	19P21-E	47	19SDM-Y	42, 43	19V26-B	46	22SVF-W	48, 49	23SVF-G	50	
18V28-G	32	19P21-G	47	19SVF-B	44, 45, 46	19V26-C	46	22SVM-E	48, 49	23SVF-R	49, 50	
18V28-H	32	19P21-H	47	19SVF-E	44, 45, 46	19V26-E	46	22SVM-R	48, 49	23SVF-W	49, 50	
18V28-O	32	19P21-O	47	19SVF-G	44, 45, 46	19V26-G	46	22SVM-W	48, 49	23SVM-B	50	
18V28-R	32	19P21-R	47	19SVF-H	44, 45, 46	19V26-H	46	23H21-E	52	23SVM-E	50	
18V28-W	32	19P21-W	47	19SVF-O	44, 45, 46	19V26-I	46	23H21-R	52	23SVM-G	50	
18V28-Y	32	19P21-Y	47	19SVF-R	44, 45, 46	19V26-R	46	23H21-W	52	23SVM-R	50	
SERIES 19—Pages 42–47			19P22-B	47	19SVF-W	44, 45, 46	19V26-W	46	23H22-E	52	23SVM-W	50
19D21-B	42	19P22-E	47	19SVF-Y	44, 45, 46	19V26-Y	46	23H22-R	52			
19D21-C	42	19P22-G	47	19SVM-B	44, 45, 46	SERIES 22/23—Pages 48–52			23H22-W	52		
19D21-E	42	19P22-H	47	19SVM-E	44, 45, 46	22H21-E	52	23L21-C	49			
19D21-G	42	19P22-O	47	19SVM-G	44, 45, 46	22H21-R	52	23L21-E	49			
19D21-H	42	19P22-R	47	19SVM-H	44, 45, 46	22H21-W	52	23L21-R	49			
19D21-O	42	19P22-W	47	19SVM-O	44, 45, 46	22H22-E	52	23L21-W	49			
19D21-R	42	19P22-Y	47	19SVM-R	44, 45, 46	23H21-E	52	23L22-C	50			
		19R21-B	47	19SVM-W	44, 45, 46	23H21-R	52	23L22-E	50			

Distributed by



Leviton Manufacturing Co., Inc.

59-25 Little Neck Parkway, Little Neck, NY 11362-2591
Telephone: 1-800-323-8920 • FAX: 1-800-832-9538
Tech Line (8:30AM-6:00PM E.S.T. Monday-Friday): 1-800-824-3005

Leviton Manufacturing of Canada, Ltd.

165 Hymus Boulevard, Pointe Claire, Quebec H9R 1E9
Telephone: 1-800-469-7890 • FAX: 1-800-563-1853

Leviton S.A. de C.V.

General Arista 54-A Col. Argentina, Mexico D.F., C.P. 11270
Telephone: 011-525-386-1131, 011-525-386-2052 • FAX: 011-525-386-1797

Visit Leviton's Web site at : www.leviton.com

